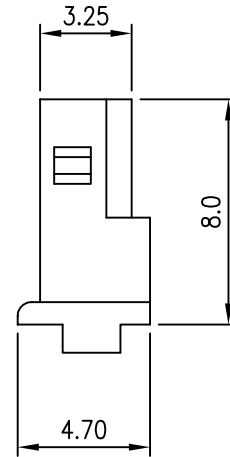
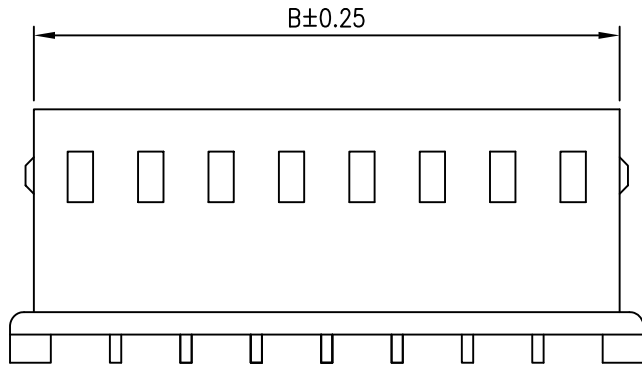
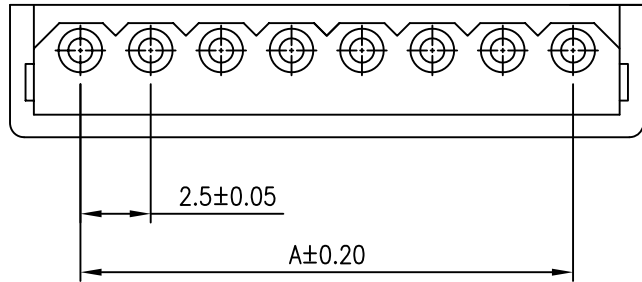




C **RI** US E182481

REV	DESCRIPTION	DATE
A1	EN980114-1	2009.01.14



NOTES

- Available in 02 through 15 Circuits
- ⚠ Material: Nylon 66 UL94-V2 or UL94-V0
- Accepts YY-1550-T Crimp Terminal
- Mates with YY-1550-W Series Header

ORDERING INFORMATION

YY-1550 - H ** *
1 2 3

- 1. H : Housing
- 2. No. of Circuits 02~15
- ⚠ 3. Material
 - : Nylon 66 UL94-V2
 - Q : Nylon 66 UL94-V0

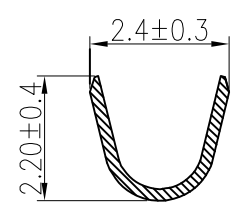
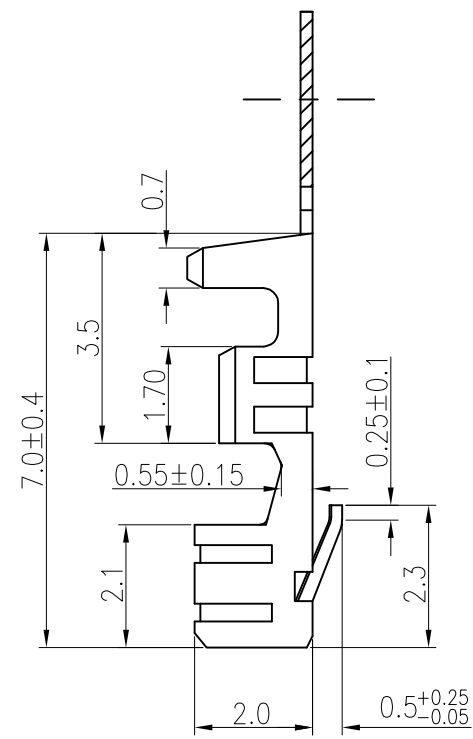
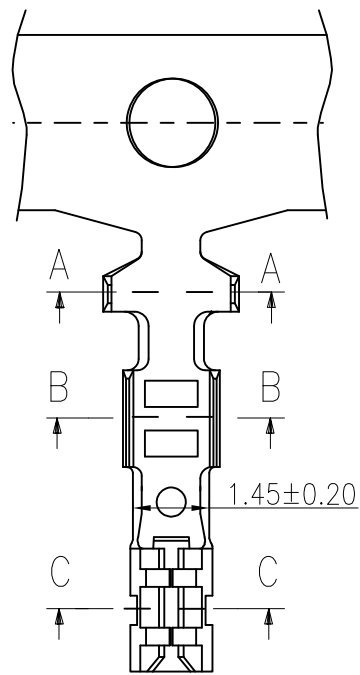
Circuits	Dimension mm		Circuits	Dimension mm	
	A	B		A	B
2	2.50	5.80	9	20.00	23.30
3	5.00	8.30	10	22.50	25.80
4	7.50	10.80	11	25.00	28.30
5	10.00	13.30	12	27.50	30.80
6	12.50	15.80	13	30.00	33.30
7	15.00	18.30	14	32.50	35.80
8	17.50	20.80	15	35.00	38.30

TOLERANCE					
X.	--	TITLE 2.5mm(.098") Pitch Wire to Board Housing			
X.X	±0.20				
X.XX	±0.15				
X.XXX	±0.05				
ANGULAR	--				
APPROVALS					
DRAWN	Frank	VIEW	SCALE	PART NO.	REV.
	14-JANUARY-2009		4:1	YY-1550-H***	A1
CHECKED	Denise	UNIT	SIZE	DWG NO.	SHEET
	14-JANUARY-2009	MM	A4	YY-1550-H***-014	1 OF 1
APPROVED	Jessica				
	14-JANUARY-2009				

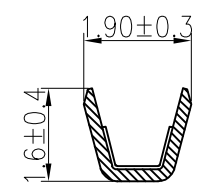
Young Yak
 2009.01.15
 ISSUED



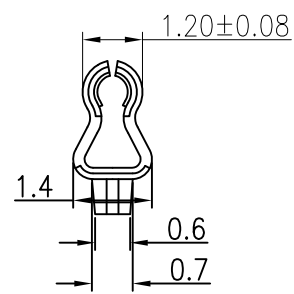
REV	DESCRIPTION	DATE
A4	EC20141201001	2014.12.01



断面 A-A
SECT. A-A



断面 B-B
SECT. B-B



断面 C-C
SECT. C-C

Features:

- * Used in YY-1550-TXXX Series Terminal
- * Accepts AWG #22~28 Wire Range
- * Insulation O.D.= 1.90 mm(max)
- * Material : Phosphor Bronze or Brass
- * Finish : Tin-Plated or Gold-Plated
- * Qty/Reel : 10,000 PCS
- * Thickness: 0.20mm

Ordering information:

YY-1550-T X X X
1 2 3 4

- 1 T=Terminal
- 2 Plated:
T=Tin G=Gold
- 3 Plated Method:
A: Plated before stamping
B: Stamping before plated
- 4 Material:
□BRASS
P:Phosphor bronze

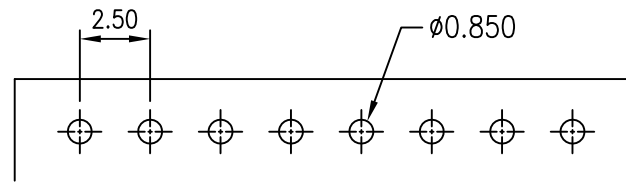
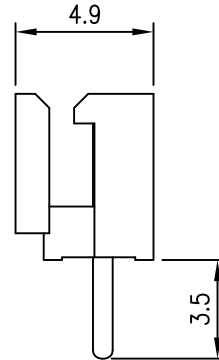
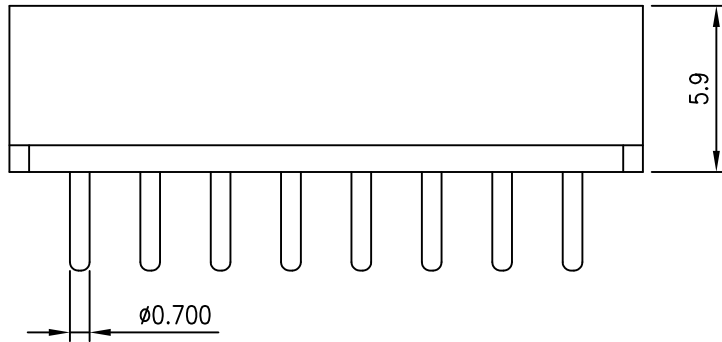
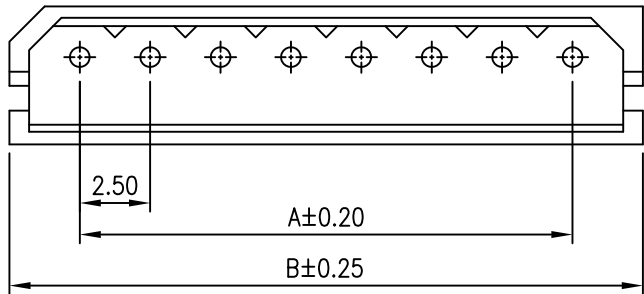


TOLERANCE					
X.	--				
X.X	±0.25				
X.XX	±0.2				
X.XXX	--				
ANGULAR	1°				
APPROVALS					
DRAWN	Jinsong.T 2014.12.01	VIEW	SCALE	PART NO.	REV.
CHECKED	HQ 2014.12.01		F	YY-1550-TXXX-X	A4
APPROVED	TANG 2014.12.01	UNIT	SIZE	DWG NO.	SHEET
		mm	A4	A2504T014	1 OF 1



C **RI** US E182481

REV	DESCRIPTION	DATE
A1	EN980114-1	2009.01.14



P.C.B LAYOUT

NOTES

- Available in 02 through 15 Circuits
- △ Material: Nylon 66 UL94-V2 or UL94-V0
- Mate with YY-1550-H series Housing
- 0.7mm(.027") Round Pin
- Pin Material: Brass/Tin-Plated

ORDERING INFORMATION

YY-1550 - W ** S T *
 1 2 3 4

- 1. No. of Circuits 02~15
- 2. S : Straight
- 3. Plated
 T : Tin
- △ 4. Material
 □ : Nylon 66 UL94-V2
 Q : Nylon 66 UL94-V0

Circuits	Dimension mm		Circuits	Dimension mm	
	A	B		A	B
2	2.50	7.50	9	20.00	25.00
3	5.00	10.00	10	22.50	27.50
4	7.50	12.50	11	25.00	30.00
5	10.00	15.00	12	27.50	32.50
6	12.50	17.50	13	30.00	35.00
7	15.00	20.00	14	32.50	37.50
8	17.50	22.50	15	35.00	40.00

TOLERANCE X. -- X.X ±0.20 X.XX ±0.10 X.XXX ±0.05 ANGULAR --		 Young Yak Enterprise Co., Ltd. TITLE 2.5mm(.098") Pitch Wire to Board Header		
APPROVALS DRAWN Frank 14-JANUARY-2009 CHECKED Denise 14-JANUARY-2009 APPROVED Jessica 14-JANUARY-2009				





C **YI** US E182481

REV	DESCRIPTION	DATE
A1	EN980114-1	2009.01.14
A2	EN000418-1	2011.04.18

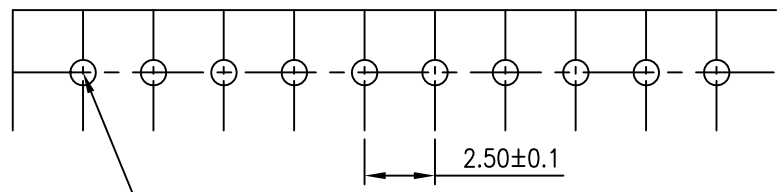
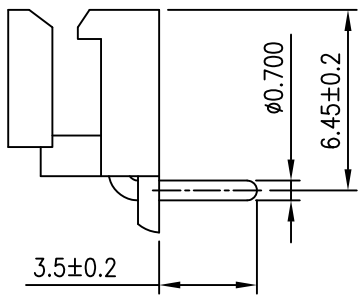
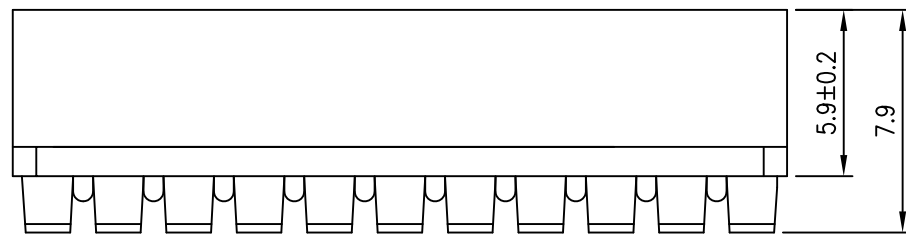
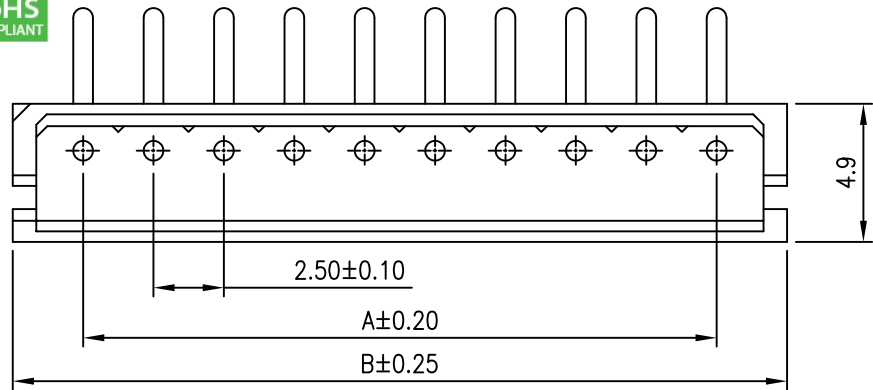
NOTES

Available in 02 through 15 Circuits
 Material: Nylon 66 UL94-V2 or UL94-V0
 Mate with YY-1550-H series Housing
 0.7mm(.027") Round Pin
 Pin Material: Brass/Tin-Plated

ORDERING INFORMATION

YY-1550 - W ** R T *
 1 2 3 4

- No. of Circuits 02~15
- R : Right Angle
- Plated
T : Tin
- Material
□ : Nylon 66 UL94-V2
Q : Nylon 66 UL94-V0



P.C.B. Thickness 0.8~1.6mm
 P.C.B. Hole dia $\phi 0.9\text{mm} \pm 0.05$

P.C.B LAYOUT

Circuits	Dimension mm		Circuits	Dimension mm	
	A	B		A	B
2	2.50	7.50	9	20.00	25.00
3	5.00	10.00	10	22.50	27.50
4	7.50	12.50	11	25.00	30.00
5	10.00	15.00	12	27.50	32.50
6	12.50	17.50	13	30.00	35.00
7	15.00	20.00	14	32.50	37.50
8	17.50	22.50	15	35.00	40.00

TOLERANCE	
X.	--
X.X	± 0.25
X.XX	± 0.13
X.XXX	± 0.05
ANGULAR	--
APPROVALS	
DRAWN	Frank 18-April-2011
CHECKED	Denise 18-April-2011
APPROVED	Jessica 18-April-2011



TITLE
 2.5mm(.098") Pitch
 Wire to Board Header

VIEW	SCALE	PART NO.	REV.
	F	YY-1550-W**RT*	A2
UNIT	SIZE	DWG NO.	SHEET
MM	A4	YY-1550-W**RT*-014	1 OF 1

