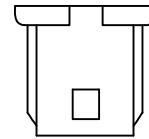
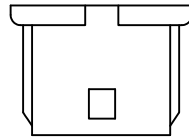
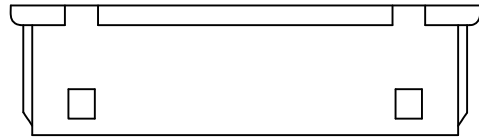




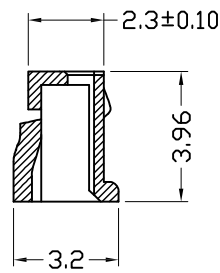
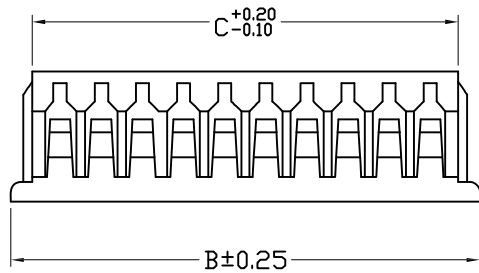
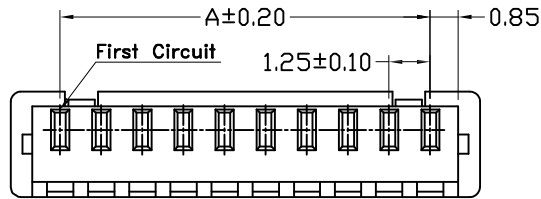
C **RI** US E182481

REV	DESCRIPTION	DATE



3Circuit

2Circuit



**NOTES**

Available in 02 through 15 Circuits  
 Material: Nylon 66 UL94-V0  
 Accepts YY-0800-T Crimp Terminal  
 Mates with YY-0800-W\*\*S or  
 YY-0800-W\*\*R Series Header

**ORDERING INFORMATION**

YY-0800 -  $\frac{H}{1}$   $\frac{**}{2}$   $\frac{N}{3}$  -  $\frac{HF}{4}$

1. H : Housing
2. No. of Circuits 02~15
3. Nylon 66 UL94-V0
4. Halogen Free

Circuits	Dimension mm			Circuits	Dimension mm		
	A	B	C		A	B	C
2	1.25	4.25	2.95	9	10.00	13.00	11.70
3	2.50	5.50	4.20	10	11.25	14.25	12.95
4	3.75	6.75	5.45	11	12.50	15.50	14.20
5	5.00	8.00	6.70	12	13.75	16.75	15.45
6	6.25	9.25	7.95	13	15.00	18.00	16.70
7	7.50	10.50	9.20	14	16.25	19.25	17.95
8	8.75	11.75	10.45	15	17.50	20.50	19.20



TOLERANCE					
X.	--	<b>Young Yak Enterprise Co., Ltd.</b> TITLE 1.25mm(.049") Pitch Wire to Board Housing			
X.X	±0.30				
X.XX	±0.20				
X.XXX	±0.10				
ANGULAR	--				
APPROVALS					
DRAWN	Kang 17-June-2013	VIEW	SCALE	PART NO.	REV.
CHECKED	Denise 17-June-2013		3:1	YY-0800-H**N-HF	A1
APPROVED	Jessica 17-June-2013	UNIT	SIZE	DWG NO.	SHEET
		MM	A4	YY-0800-H**N-HF-217	1 OF 1



C **YI** US E182481

REV	DESCRIPTION	DATE
A1	EN201409110001	2014-09-11

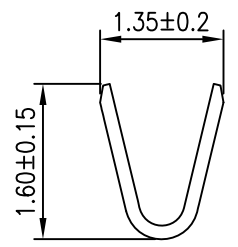
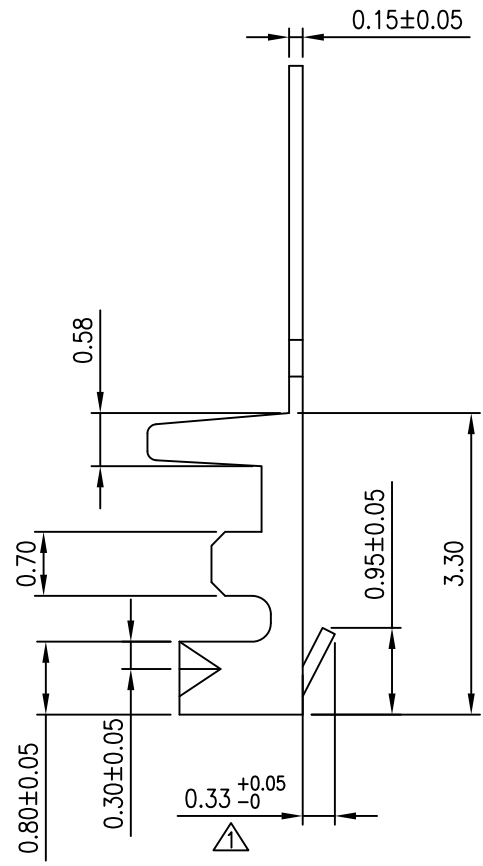
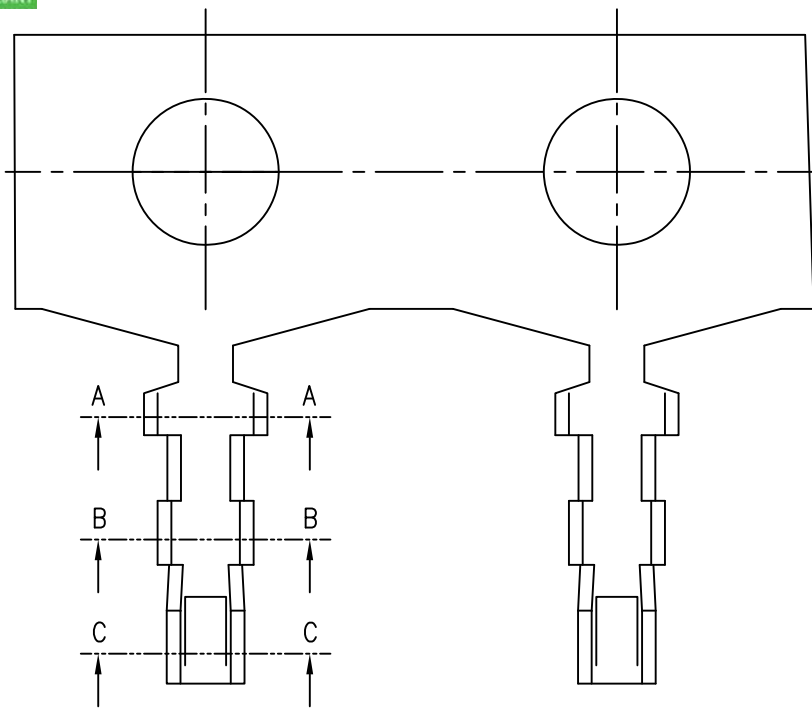
**NOTES**

Used in YY-0800-H Series Housing  
 Accepts AWG 28~32 Wire Range  
 Insulation O.D.=1.0(max)  
 Material : Phosphor bronze  
 Qty/reel : 15,000 pcs  
 Finish : Tin-plated  
 Thickness: 0.15mm

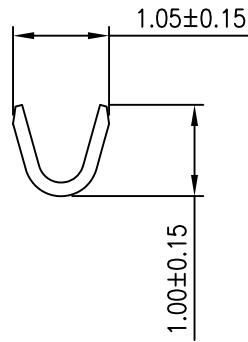
**ORDERING INFORMATION**

**YY-0800 - T TA P**  
 1 2 3

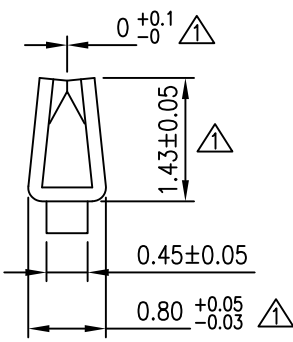
1. T : Terminal
2. TA : Tin , Pre-tinned
3. Material  
P : Phosphor bronze



A-A



B-B



C-C

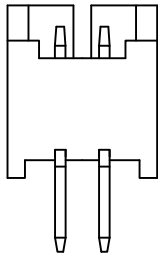
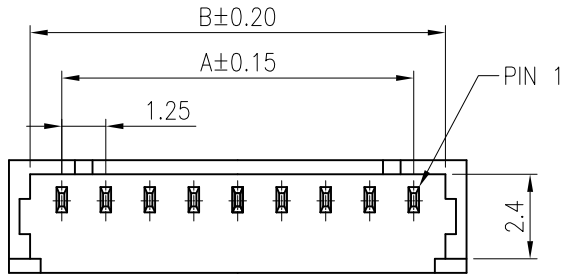


TOLERANCE		<b>Young Yak Enterprise Co., Ltd.</b>			
X.	--	TITLE 1.25mm(.049") Pitch Wire to Board Terminal			
X.X	±0.25				
X.XX	±0.15	APPROVALS			
X.XXX	±0.05				
ANGULAR	--	DRAWN Kang 11-September-2014			
VIEW		SCALE	PART NO.	REV.	
F		F	YY-0800-TTAP	A1	
UNIT		SIZE	DWG NO.	SHEET	
MM		A4	YY-0800-TTAP-125	1 OF 1	
APPROVED Jessica 11-September-2014					

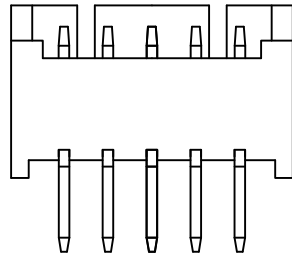


C US E182481

REV	DESCRIPTION	DATE
A0	ECR-201306170001	2013/6/18



02~03P



04~15P

**NOTES**

Available in 02 through 15 Circuits  
 Material: High Temperature Plastic UL94-V0  
 Terminal Material: Copper Alloy  
 Plating: Matte Tin-plated  
 Accepts YY-0800-H Series Housing

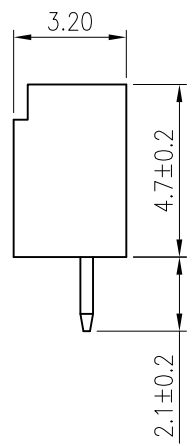
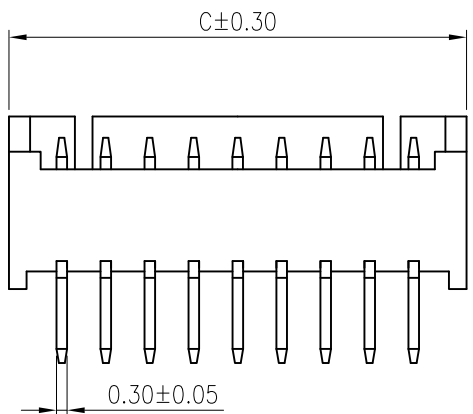
**SPECIFICATION:**

Current rating: 1 Amp.  
 Voltage rating: 125V AC  
 Contact Resistance: 20mΩ Max.(Initial) 40mΩ Max.(Final)  
 Insulation Resistance: 100MΩ Min. At 500V  
 Dielectric Withstanding Voltage: 250V/minute

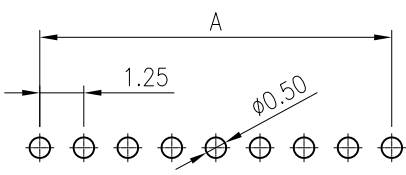
**ORDERING INFORMATION:**

YY - 0800 - W \*\* S T1 - HF  
                   1   2   3   4

1. W : Wafer
2. No. of Circuits : 02 ~ 15 Pin
3. S : Straight
4. T1 : Matte Tin-plated



Circuits	Dimension mm			Circuits	Dimension mm		
	A	B	C		A	B	C
2	1.25	3.05	4.25	9	10.00	11.80	13.00
3	2.50	4.30	5.50	10	11.25	13.05	14.25
4	3.75	5.55	6.75	11	12.50	14.30	15.50
5	5.00	6.80	8.00	12	13.75	15.55	16.75
6	6.25	8.05	9.25	13	15.00	16.80	18.00
7	7.50	9.30	10.50	14	16.25	18.05	19.25
8	8.75	10.55	11.75	15	17.50	19.30	20.50



RECOMMENDED P.C.B LAYOUT  
 TOLERANCE:±0.05

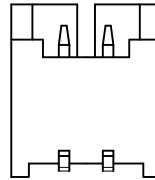
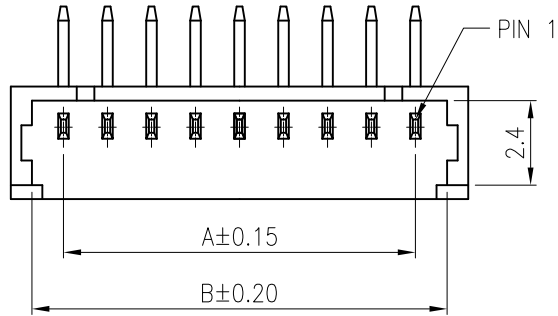


<b>TOLERANCE</b> X. ±0.35 X.X ±0.25 X.XX ±0.15 X.XXX ±0.05 ANGULAR --			
<b>APPROVALS</b> DRAWN Kang 18-June-2013 CHECKED Denise 18-June-2013 APPROVED Jessica 18-June-2013			
VIEW 	SCALE F	PART NO. YY-0800-W**ST1-HF	REV. A0
UNIT MM	SIZE A4	DWG NO. YY-0800-W**ST1-HF-212	SHEET 1 OF 1

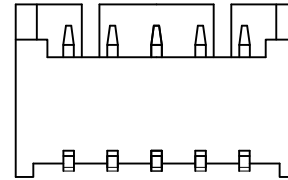


US E182481

REV	DESCRIPTION	DATE
A0	ECR-201306170001	2013/06/18



02~03P



04~15P

**NOTES**

Available in 02 through 15 Circuits  
 Material: High Temperature Plastic UL94-V0  
 Terminal Material: Copper Alloy  
 Plating: Matte Tin-plated  
 Accepts YY-0800-H Series Housing

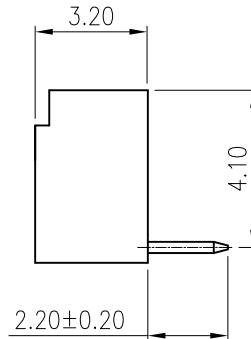
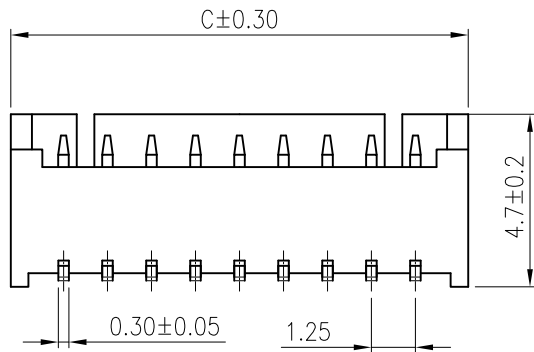
**SPECIFICATION:**

Current rating: 1 Amp.  
 Voltage rating: 125V AC  
 Contact Resistance: 20mΩ Max.(Initial) 40mΩ Max.(Final)  
 Insulation Resistance: 100MΩ Min. At 500V  
 Dielectric Withstanding Voltage: 250V/minute

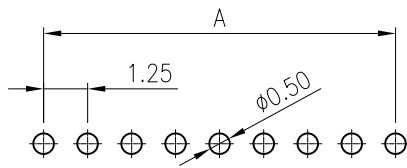
**ORDERING INFORMATION:**

YY - 0800 -  $\frac{W}{1}$   $\frac{**}{2}$   $\frac{R}{3}$   $\frac{T1}{4}$  - HF

1. W : Wafer
2. No. of Circuits : 02 ~ 15 Pin
3. R : Right Angle
4. T1 : Matte Tin-plated



Circuits	Dimension mm			Circuits	Dimension mm		
	A	B	C		A	B	C
2	1.25	3.05	4.25	9	10.00	11.80	13.00
3	2.50	4.30	5.50	10	11.25	13.05	14.25
4	3.75	5.55	6.75	11	12.50	14.30	15.50
5	5.00	6.80	8.00	12	13.75	15.55	16.75
6	6.25	8.05	9.25	13	15.00	16.80	18.00
7	7.50	9.30	10.50	14	16.25	18.05	19.25
8	8.75	10.55	11.75	15	17.50	19.30	20.50



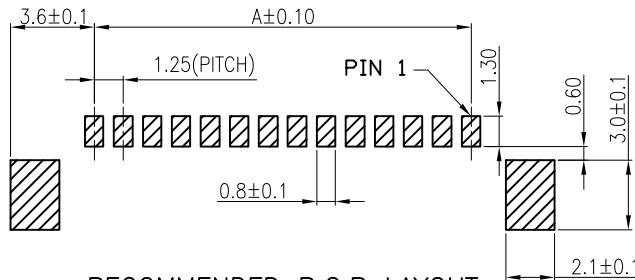
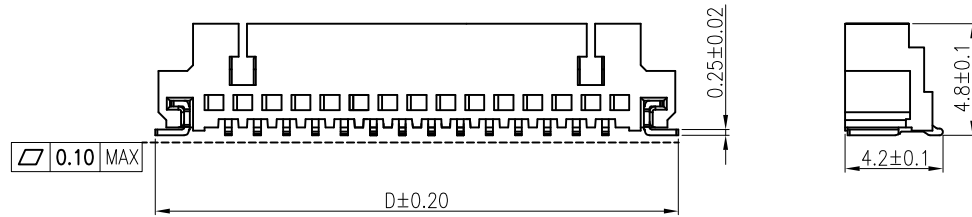
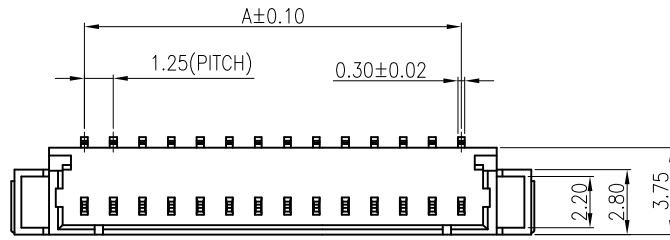
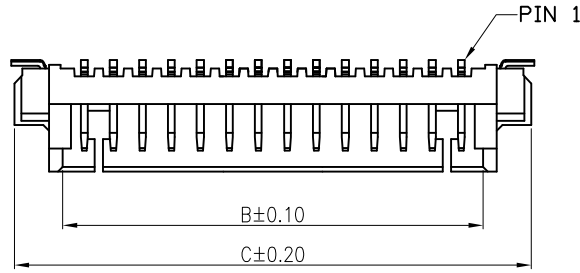
RECOMMENDED P.C.B LAYOUT  
 TOLERANCE:±0.05



<b>TOLERANCE</b> X. ±0.35 X.X ±0.25 X.XX ±0.15 X.XXX ±0.05 ANGULAR --			
<b>APPROVALS</b> DRAWN Kang 18-June-2013 CHECKED Denise 18-June-2013 APPROVED Jessica 18-June-2013			
VIEW	SCALE	PART NO.	REV.
	F	YY-0800-W**RT1-HF	A0
UNIT	SIZE	DWG NO.	SHEET
MM	A4	YY-0800-W**RT1-HF-212	1 OF 1



C **RI** US E182481



RECOMMENDED P.C.B LAYOUT

REV	DESCRIPTION	DATE
A0	EN000920-1	2011.09.20
A1	EN010222-1	2012.02.22

**NOTES**

Available in 2 through 16 Circuits  
 Accepts YY-0800-H Series Housing  
 Housing: High Temperature Plastic UL94-V0  
 Color: Nature  
 Contact: Brass/Tin-Plated  
 Leg: Brass/Tin-Plated

**SPECIFICATION:**

Current rating: 1 Amp. Max.  
 Voltage rating: 100V AC/DC

**ORDERING INFORMATION**

YY-0800 - S \*\* S T A  
                   1 2 3 4 5

- S : SMT
- No. of Circuits 02~15
- S : Straight
- Plated: T : Tin
- Packing  
A : Tape & Reel

Circuits	Dimension (mm)				Circuits	Dimension (mm)			
	A	B	C	D		A	B	C	D
2	1.25	3.10	7.35	7.55	10	11.25	13.10	17.35	17.55
3	2.50	4.35	8.60	8.80	11	12.50	14.35	18.60	18.80
4	3.75	5.60	9.85	10.05	12	13.75	15.60	19.85	20.05
5	5.00	6.85	11.10	11.30	13	15.00	16.85	21.10	21.30
6	6.25	8.10	12.35	12.55	14	16.25	18.10	22.35	22.55
7	7.50	9.35	13.60	13.80	15	17.50	19.35	23.60	23.80
8	8.75	10.60	14.85	15.05	16	18.75	20.60	24.85	25.05
9	10.00	11.85	16.10	16.30	—	—	—	—	—

TOLERANCE	
X.	--
X.X	±0.35
X.XX	±0.20
X.XXX	--
ANGULAR	--
APPROVALS	
DRAWN	Joan
	22-February-2012
CHECKED	Denise
	22-February-2012
APPROVED	Jessica
	22-February-2012

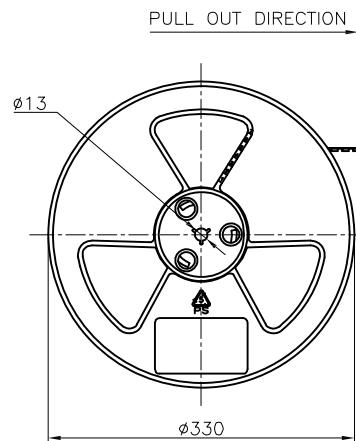


**Young Yak Enterprise Co., Ltd.**

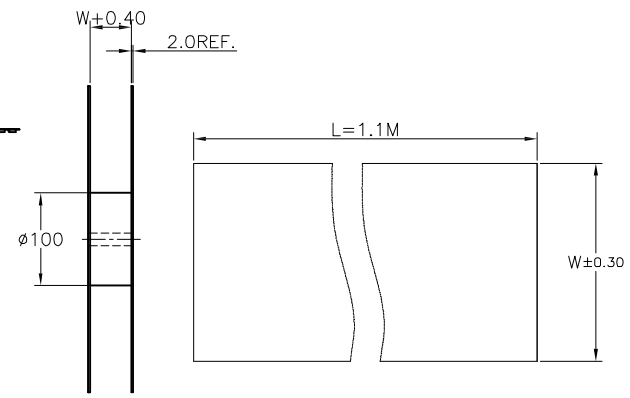
TITLE  
 1.25mm(.049") Pitch  
 Wire to Board Header

VIEW	SCALE	PART NO.	REV.
	F	YY-0800-S**STA	A1
UNIT	SIZE	DWG NO.	SHEET
MM	A4	YY-0800-S**STA-187	1 OF 2

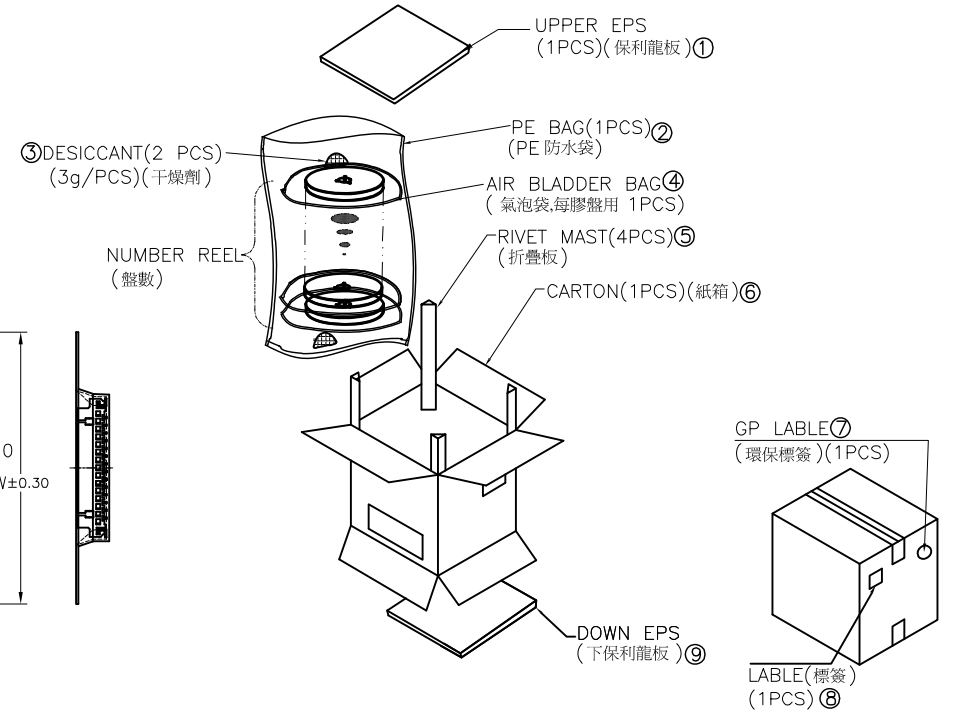
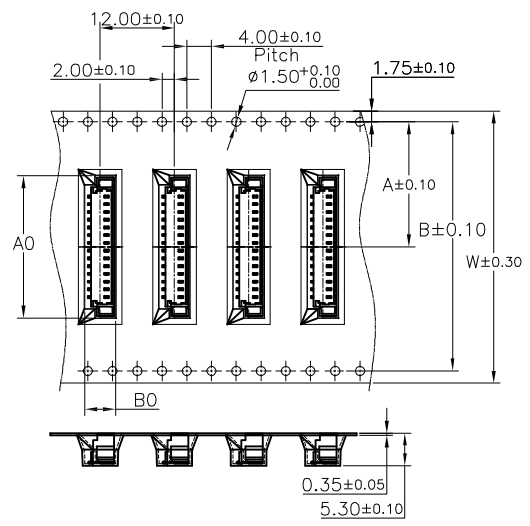
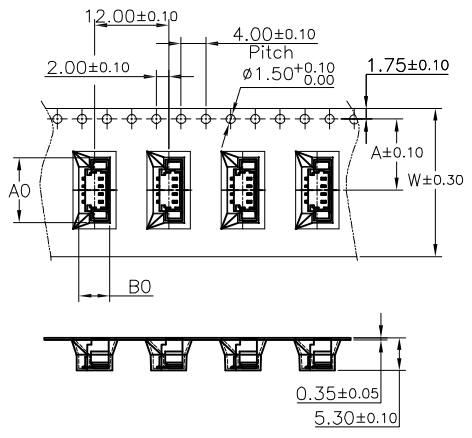




SCALE 3:20



- NOTES :
- 1.CARTON SPEC. :350 \*350 \*340mm(OUT DIM) , PAPPER THICKNESS =5mm
  - 2.UPPER and DOWN EPS: 340\*340mm THICKNESS =8mm.
  - 3.THE COVER TAPE PEELING FORCE:30~100g.
  - 4.PER REEL CASED ONE AIR BLADDER BAG.
  - 5.CARRIER TAPE COLOR:transparent
  - 6.COMMENCE AND ENDED 200mm(16PCS) DON'T PUT IN PRODUCE.



PULL OUT DIRECTION

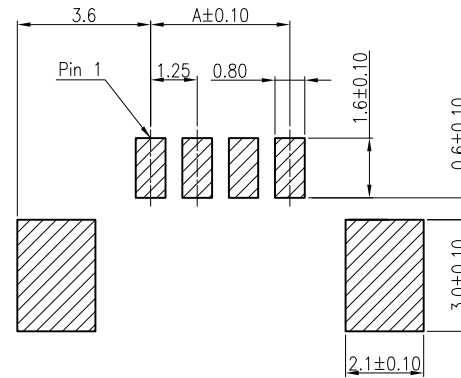
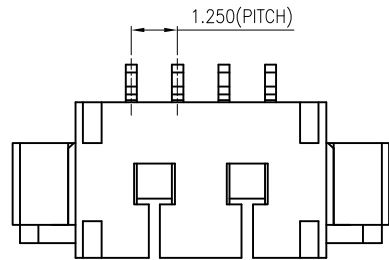
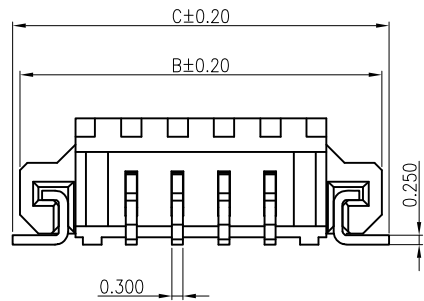
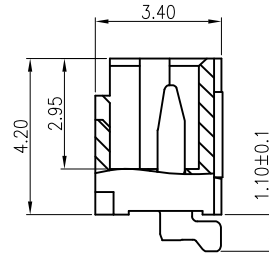
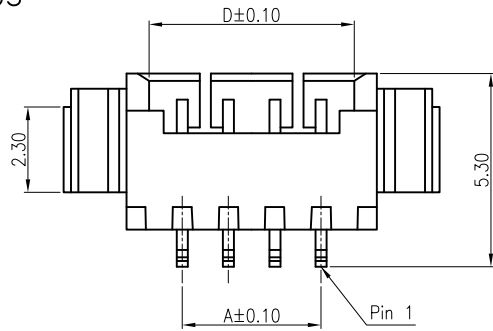
PULL OUT DIRECTION

PIN NO.	W	A	B	A0	B0	PCS /REEL	REEL/CARTON	SUM(PCS)
2PIN	16	7.5	—	8.0+	5.0	1000	15	15000
3PIN~8PIN	24	11.5	—	(n-2)*1.25	5.0	1000	10	10000
9PIN~13PIN	32	14.2	28.4	(n=pin no)	5.0	1000	8	8000
14PIN~16PIN	44	20.2	40.4		5.0	1000	6	6000

<b>TOLERANCE</b> X.        -- X.X       ±0.35 X.XX      ±0.20 X.XXX    -- ANGULAR  --		<b>Young Yak Enterprise Co., Ltd.</b> TITLE 1.25mm(.049") Pitch Wire to Board Header			
<b>APPROVALS</b> DRAWN    Joan 22-February-2012 CHECKED Denise 22-February-2012 APPROVED Jessica 22-February-2012					VIEW 
		UNIT MM	SIZE A4	DWG NO. YY-0800-S**STA-187	SHEET 2 OF 2



US E182481



RECOMMENDED P.C.B LAYOUT

REV	DESCRIPTION	DATE
A1	EN010222-1	2012.02.22
A2	EN011105-2	2012.11.05

**NOTES**

Available in 2 through 16 Circuits  
 Accepts YY-0800-H Series Housing  
 Housing: High Temperature Plastic UL94-V0  
 Color: Nature  
 Contact: Brass/Tin-Plated  
 Leg: Brass/Tin-Plated

**SPECIFICATION:**

Current rating: 1 Amp. Max.  
 Voltage rating: 100V AC/DC

**ORDERING INFORMATION**

YY-0800 - S \*\* R T A  
 1 2 3 4 5

- S : SMT
- No. of Circuits 02~15
- R : Right Angle
- Plated T : Tin
- Packing  
A : Tape & Reel

Circuits	Dimension (mm)				Circuits	Dimension (mm)			
	A	B	C	D		A	B	C	D
2	1.25	7.25	7.65	3.05	10	11.25	17.25	17.65	13.05
3	2.50	8.50	8.90	4.30	11	12.50	18.50	18.90	14.30
4	3.75	9.75	10.15	5.55	12	13.75	19.75	20.15	15.55
5	5.00	11.00	11.40	6.80	13	15.00	21.00	21.40	16.80
6	6.25	12.25	12.65	8.05	14	16.25	22.25	22.65	18.05
7	7.50	13.50	13.90	9.30	15	17.50	23.50	23.90	19.30
8	8.75	14.75	15.15	10.55	16	18.75	24.75	25.15	20.55
9	10.00	16.00	16.40	11.80	—	—	—	—	—

TOLERANCE	
X.	--
X.X	±0.35
X.XX	±0.20
X.XXX	--
ANGULAR	--

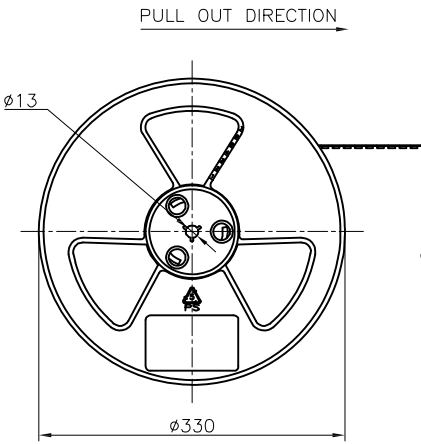


**Young Yak Enterprise Co., Ltd.**

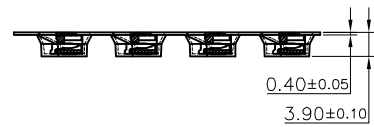
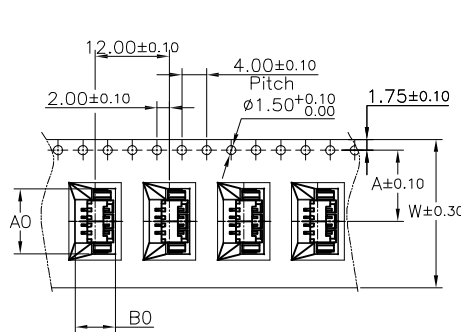
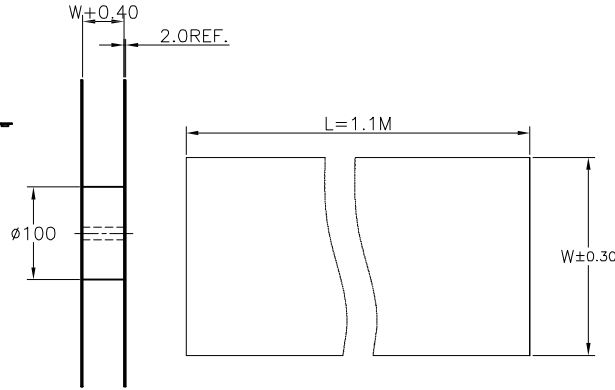
TITLE  
 1.25mm(.049") Pitch  
 Wire to Board Header

APPROVALS		VIEW	SCALE	PART NO.	REV.
DRAWN	Frank		F	YY-0800-S**RTA	A2
CHECKED	Kang				
APPROVED	Denise	UNIT	SIZE	DWG NO.	SHEET
		MM	A4	YY-0800-S**RTA-187	1 OF 2

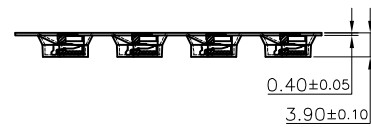
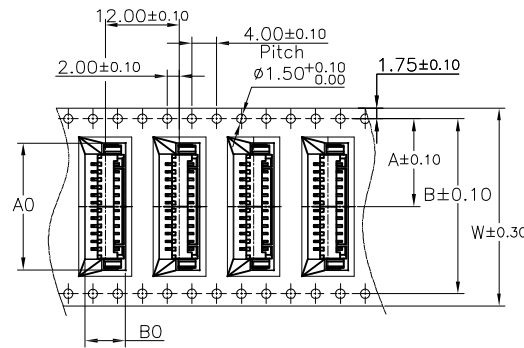




SCALE 3:20



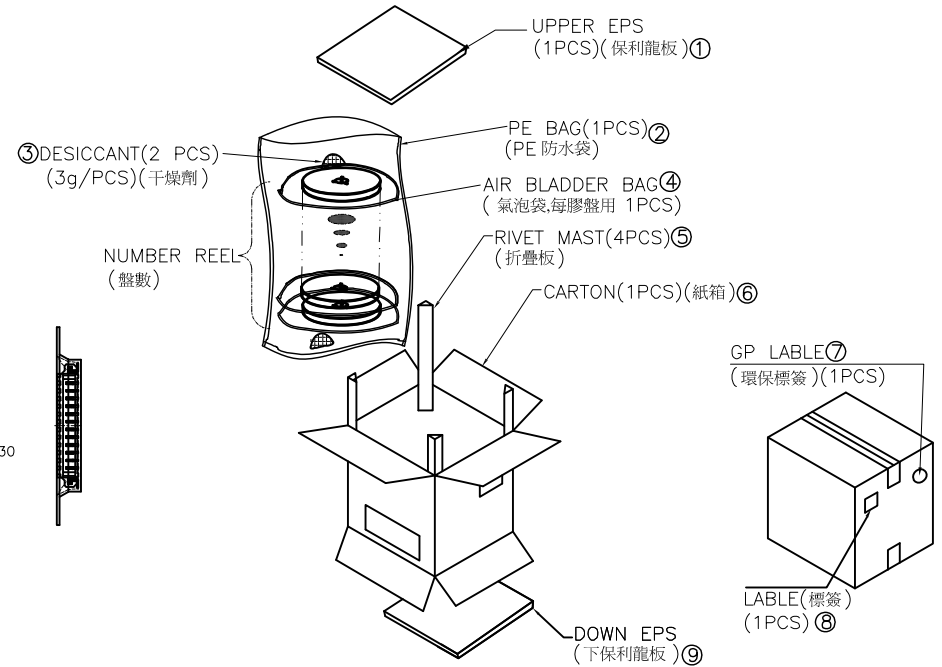
PULL OUT DIRECTION



PULL OUT DIRECTION

NOTES :

1. CARTON SPEC. : 350 \* 350 \* 340mm (OUT DIM) , PAPER THICKNESS = 5mm
2. UPPER and DOWN EPS: 340\*340mm THICKNESS = 8mm.
3. THE COVER TAPE PEELING FORCE: 30~100g.
4. PER REEL CASED ONE AIR BLADDER BAG.
5. CARRIER TAPE COLOR: transparent
6. COMMENCE AND ENDED 200mm (16PCS) DON'T PUT IN PRODUCE.



PIN NO.	W	A	B	A0	B0	PCS /REEL	REEL/CARTON	SUM(PCS)
2PIN	16	7.5	—	8.0+	6.5	1500	15	22500
3PIN~8PIN	24	11.5	—	(n-2)*1.25	6.5	1500	10	15000
9PIN~13PIN	32	14.2	28.4	(n=pin no)	6.5	1500	8	12000
14PIN~16PIN	44	20.2	40.4		6.5	1500	6	9000

<b>TOLERANCE</b> X.        -- X.X       ±0.35 X.XX      ±0.20 X.XXX    -- ANGULAR  --		<b>Young Yak Enterprise Co., Ltd.</b> TITLE 1.25mm(.049") Pitch Wire to Board Header			
<b>APPROVALS</b> DRAWN    Frank 05-November-2012 CHECKED  Kang 05-November-2012 APPROVED Denise 05-November-2012					VIEW 
		UNIT MM	SIZE A4	DWG NO. YY-0800-S**RTA-187	SHEET 2 OF 2