



C **UL** US E182481

REV	DESCRIPTION	DATE

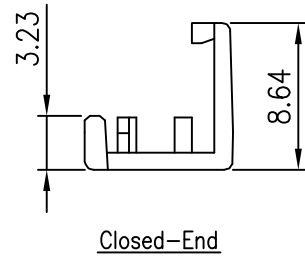
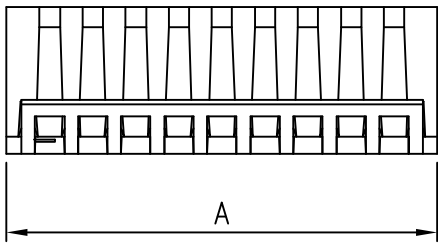
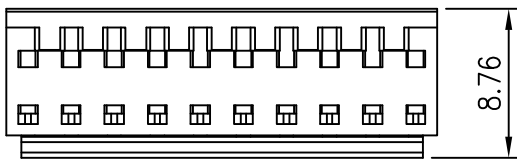
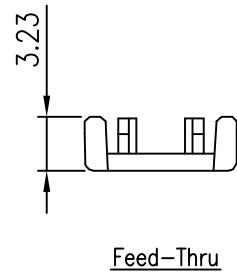
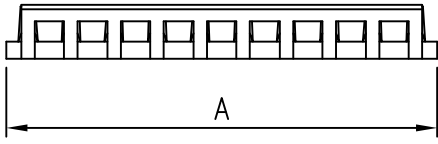
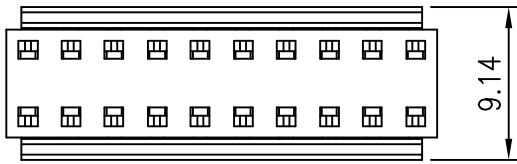
NOTES

Available in 02 through 24 Circuits
 Material: Nylon 66 UL94-V0
 Color: White

ORDERING INFORMATION

YY-1600-IDC - C ** - J - V0
 1 2 3

- 1. C : Cover (Feed-Thru)
CA : Cover (Closed End)
- 2. No. of Circuits 02~24
- 3. Color
J : White



Circuits	Dimension mm	Circuits	Dimension mm	Circuits	Dimension mm
	A		A		A
2	5.08±0.05	10	25.40±0.15	18	45.72±0.25
3	7.62±0.10	11	27.94±0.15	19	48.26±0.25
4	10.16±0.10	12	30.48±0.20	20	50.80±0.30
5	12.70±0.10	13	33.02±0.20	21	53.34±0.30
6	15.24±0.10	14	35.56±0.20	22	55.88±0.30
7	17.78±0.15	15	38.10±0.20	23	58.42±0.30
8	20.32±0.15	16	40.64±0.25	24	60.96±0.35
9	22.86±0.15	17	43.18±0.25	--	--

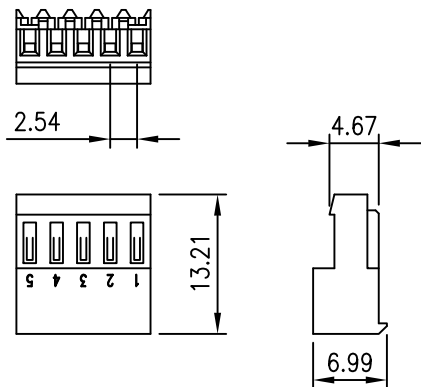
TOLERANCE		Young Yak Enterprise Co., Ltd.		
X.	--			
X.X	±0.25	TITLE 2.54mm(.100") Pitch I.D.C Connector		
X.XX	±0.15			
X.XXX	±0.05	APPROVALS		
ANGULAR	--			
DRAWN Frank	VIEW	SCALE F	PART NO. YY-1600-IDC-C**-J-V0	REV. A0
CHECKED Denise	UNIT MM	SIZE A4	DWG NO. YY-1600-IDC-C**-J-V0-085	SHEET 1 OF 1
APPROVED Jessica				

Young Yak
 2010.03.05
 ISSUED

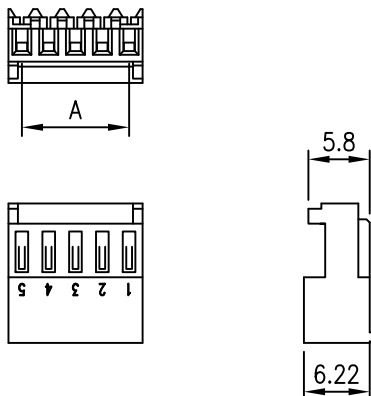


C **RI** US E182481

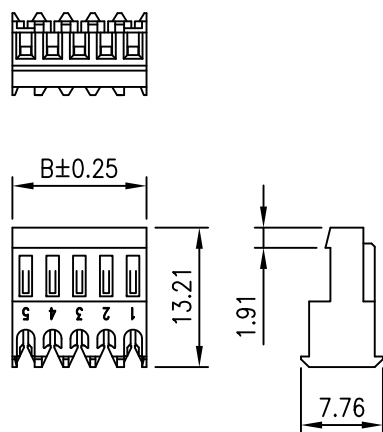
REV	DESCRIPTION	DATE
A1	EN980818-1	2009.08.18



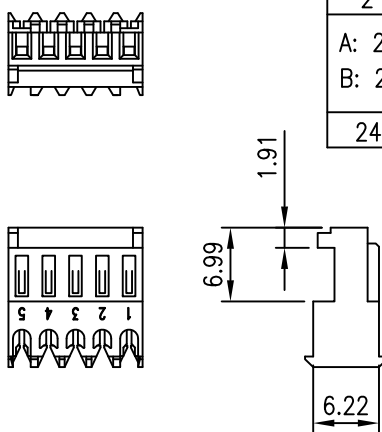
**End type
Without Polarizing Tabs**



**End type
With Polarizing Tabs**



**Feed-Thru type
Without Polarizing Tabs**



**Feed-Thru type
With Polarizing Tabs**

Circuits	Dimension mm	
	A	B
2	2.54	5.08
A: 2.54 X (PART NO. OF PIN-1) B: 2.54 X (PART NO. OF PIN)		
24	58.42	60.96

NOTES

Available in 02 through 24 Circuits
Material: Nylon 66 UL94V-2
Mates with YY-1600-WXX
Through and end type

SPECIFICATION:

Current rating: 3A AC, DC
Voltage rating: 250V AC, Max.
Operation temperature: -40°C to +105°C
Contact Resistance: Initial Value/10mΩ Max.
After environmental testing/20mΩ Max.
Insulation Resistance: 1000MΩ Min.
Dielectric Withstanding Voltage: 1500V AC/minute
Applicable wire: AWG #22 ~ #28

ORDERING INFORMATION

YY - 1600 - IDC - * ** T * *
 1 2 3 4 5

- Wire size / Housing Color: 2: #22 / Red
 9: #24 / White
 6: #26 / Blue
 5: #28 / Green
- No. of Circuits : 02 ~ 24 Pin
- T : Tin Plated
- Housing Type : E: End Type
 T: Feed-Thru Type
- Housing Type : 1: W/O Polarizing Tabs
 2: W/Polarizing Tabs



TOLERANCE	
X.	--
X.X	±0.25
X.XX	±0.20
X.XXX	±0.05
ANGULAR	--
APPROVALS	
DRAWN	Frank 18-August-2009
CHECKED	Denise 18-August-2009
APPROVED	Jessica 18-August-2009



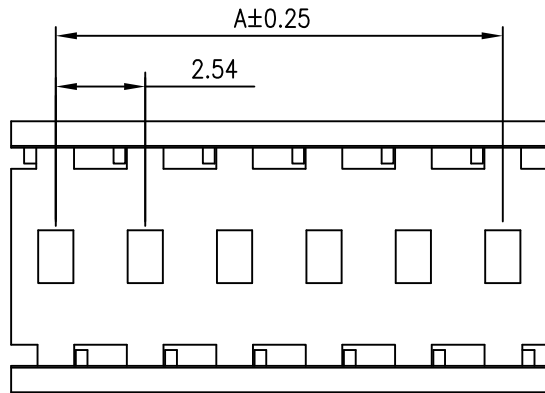
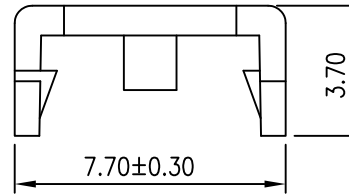
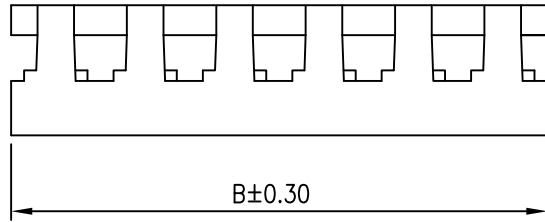
TITLE
2.54mm(.100") Pitch IDC Connector

VIEW	SCALE	PART NO.	REV.
	F	YY-1600-IDC-***T**	A1
UNIT	SIZE	DWG NO.	SHEET
MM	A4	YY-1600-IDC-***T**-085	1 OF 1



C **YI** US E182481

REV	DESCRIPTION	DATE



NOTES

Available in 02 through 20 Circuits
Material: Nylon 66 UL94V-2

ORDERING INFORMATION

YY-1600-IDC - C - ** - *
 1 2 3

- 1. C : Cover
- 2. No. of Circuits 02~20
- 3. Color
 - : Nature
 - A : Black

Circuits	Dimension mm	
	A	B
2	2.54	5.08
3	5.08	7.62
A:2.54X(PART NO. OF PIN-1)		
B:2.54X(PART NO. OF PIN)		
20	48.26	50.80

TOLERANCE				
X.	--	TITLE 2.54mm(.100") Pitch I.D.C Connector		
X.X	±0.25			
X.XX	±0.20			
X.XXX	±0.05			
ANGULAR	--			
APPROVALS				
DRAWN	Frank	VIEW	SCALE	PART NO.
22-September-2009			F	YY-1600-IDC-C-***-*
CHECKED	Denise	UNIT	SIZE	DWG NO.
22-September-2009		MM	A4	YY-1600-IDC-C-***-*-014
APPROVED	Jessica	REV.	SHEET	
22-September-2009		A0	1 OF 1	





C **YI** US E182481

REV	DESCRIPTION	DATE
A1	EN981001-1	2009.10.01
A2	EN990115-1	2010.01.15

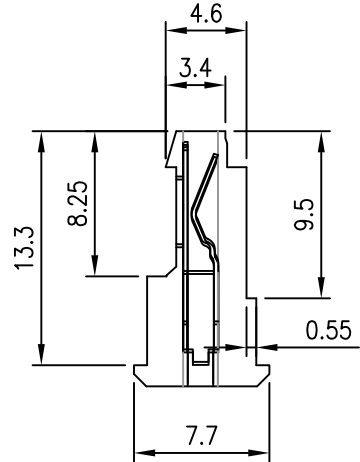
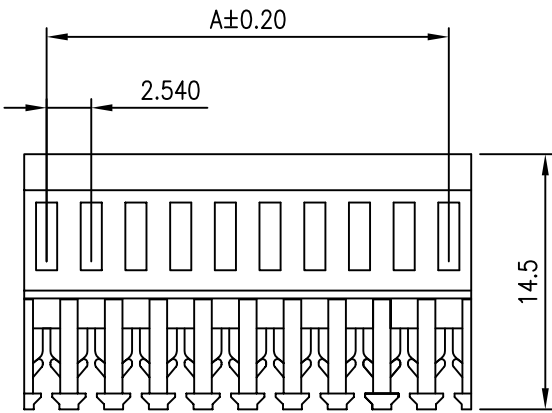
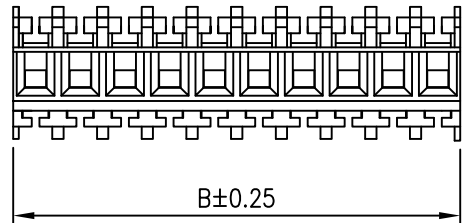
NOTES

Available in 02 through 20 circuits
 Material: Nylon 66 UL94-V2
 Mates with YY-1600-W
 Through 180°
 Terminal retention to housing
 6.6lbs(3.0kg)minimum

ORDERING INFORMATION

YY-1600-IDC - * ** * T - *
 1 2 3 4 5

- Wire Size / Housing Color
 2 : 22# -Red 4 : 24# -Black
 6 : 26# -Blue
- No. of Circuits 02~20
- Plated
 G : Gold T : Tin
- T : Through 180°
- Color
 N : Nature D : Orange H : Purple
 A : Black E : Yellow I : Gray
 B : Brown F : Green J : White
 C : Red G : Blue K : Pink



Circuits	Dimension mm		Circuits	Dimension mm		Circuits	Dimension mm	
	A	B		A	B		A	B
2	2.54	5.08	9	20.32	22.86	16	38.10	40.64
3	5.08	7.62	10	22.86	25.40	17	40.64	43.18
4	7.62	10.16	11	25.40	27.94	18	43.18	45.72
5	10.16	12.70	12	27.94	30.48	19	45.72	48.26
6	12.70	15.24	13	30.48	33.02	20	48.26	50.80
7	15.24	17.78	14	33.02	35.56	--	--	--
8	17.78	20.32	15	35.56	38.10	--	--	--

TOLERANCE	
X.	--
X.X	±0.25
X.XX	±0.20
X.XXX	±0.05
ANGULAR	--
APPROVALS	
DRAWN	Frank 15-January-2010
CHECKED	Denise 15-January-2010
APPROVED	Jessica 15-January-2010

Young Yak Enterprise Co., Ltd.

TITLE
 2.54mm(.100") Pitch I.D.C Connector

VIEW	SCALE	PART NO.	REV.
	F	YY-1600-IDC-****T-*	A2
UNIT	SIZE	DWG NO.	SHEET
MM	A4	YY-1600-IDC-****T-**-014	1 OF 1

Young Yak
 2010.01.15
 ISSUED