

RECOMMENDED PANEL CUT-OUT

PANEL MOUNT VERSION IS FOR USE WITH 0.80/2.00 THICK PANELS.
PANEL SHOULD BE PUNCHED IN THE DIRECTION OF CONNECTOR INSERTION.

REV	DESCRIPTION	DATE
A1	EN001107-1	2011.11.10
A2	EN010903-1	2012.09.03

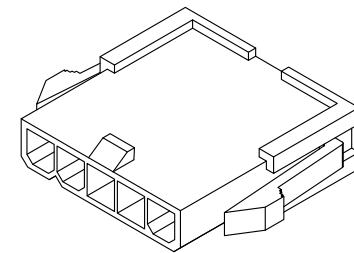
NOTES

Body: Nylon 66 UL 94V-0 OR 94V-2
Available in 02 ~ 12 Circuits
Mates with : YY-5700-H** Single Row Connectors
Use with : YY-5800-T Terminals
Packing : Bag

ORDERING INFORMATION

YY - 5800 - H** AS $\frac{*}{1} - \frac{***}{4}$

- No. of Circuits : 02 ~ 12
- Housing Type
AS : Single Row / With ear
- Material
Q : Nylon 66 UL 94V-0
□ : Nylon 66 UL 94V-2
- Housing Color
□ : Nature
116 : RAL(1016) Sulphur yellow
314 : RAL(3014) Antique pink
512 : RAL(5012) Light blue



Circuits	DIM A	DIM B	DIM C	DIM D
2	4.2	9.6	10.0	15.0
3	8.4	13.8	14.2	19.2
4	12.6	18.0	18.4	23.4
5	16.8	22.2	22.6	27.6
6	21.0	26.4	26.8	31.8
7	25.2	30.6	31.0	36.0

Circuits	DIM A	DIM B	DIM C	DIM D
8	29.4	34.8	35.2	40.2
9	33.6	39.0	39.4	44.4
10	37.8	43.2	43.6	48.6
11	42.0	47.4	47.8	52.8
12	46.2	51.6	52.0	57.0
--	--	--	--	--

TOLERANCE	
X.	--
X.X	±0.38
X.XX	±0.25
X.XXX	±0.10
ANGULAR	±1°
APPROVALS	
DRAWN	Cherry
03-September-2012	
CHECKED	Kang
03-September-2012	
APPROVED	Denise
03-September-2012	



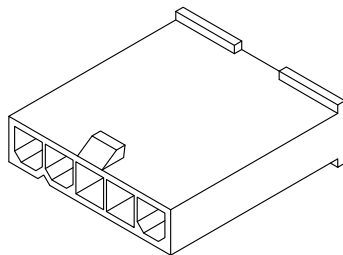
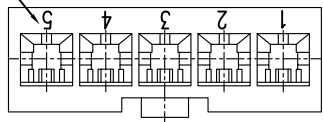
Young Yak Enterprise Co., Ltd.

TITLE			
4.20mm(.165") Pitch PLUG. SINGLE ROW			
VIEW	SCALE	PART NO.	REV.
	2:1	YY-5800-H**AS*-***	A2
UNIT	SIZE	DWG NO.	SHEET
MM	A4	YY-5800-H**AS*-014	1 OF 1



REV	DESCRIPTION	DATE
A1	EN001107-1	2011.11.10
A2	EN010903-1	2012.09.03

CIRCUIT NO.



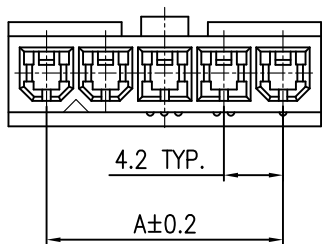
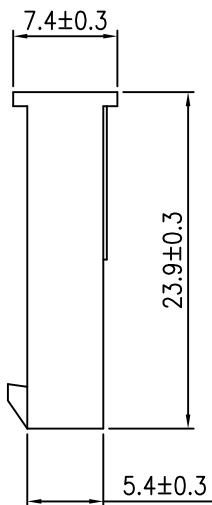
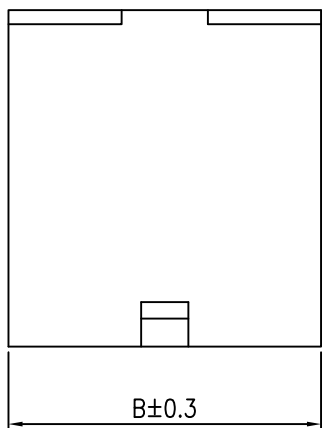
NOTES

Body: Nylon 66 UL 94V-0 OR 94V-2
 Available in 02 ~ 12 Circuits
 Mates with : YY-5700-H** Single Row Connectors
 Use with : YY-5800-T Terminals
 Packing : Bag

ORDERING INFORMATION

YY - 5800 - $\frac{H^{**}}{1}$ $\frac{ASF}{2}$ $\frac{*}{3}$ - $\frac{***}{4}$

- No. of Circuits : 02 ~ 12
- Housing Type
ASF : Single Row / Without ear
- Material
 : Nylon 66 UL 94V-0
 : Nylon 66 UL 94V-2
- Housing Color
 : Nature
 116 : RAL(1016) Sulphur yellow
 314 : RAL(3014) Antique pink
 512 : RAL(5012) Light blue



Circuits	DIM A	DIM B	Circuits	DIM A	DIM B
2	4.2	9.6	8	29.4	34.8
3	8.4	13.8	9	33.6	39.0
4	12.6	18.0	10	37.8	43.2
5	16.8	22.2	11	42.0	47.4
6	21.0	26.4	12	46.2	51.6
7	25.2	30.6	--	--	--

TOLERANCE	
X.	--
X.X	±0.38
X.XX	±0.25
X.XXX	±0.10
ANGULAR	±1°
APPROVALS	
DRAWN	Cherry
03-September-2012	
CHECKED	Kang
03-September-2012	
APPROVED	Denise
03-September-2012	



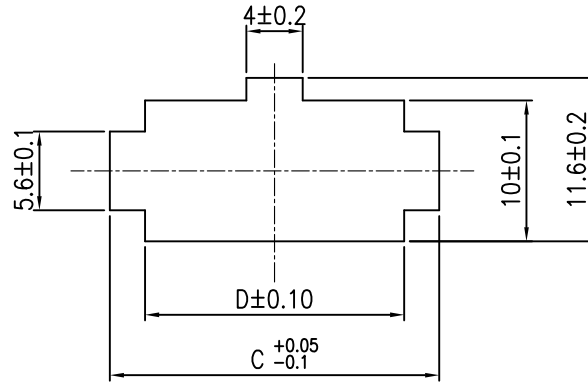
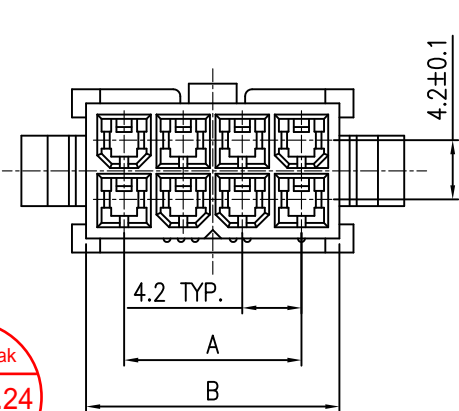
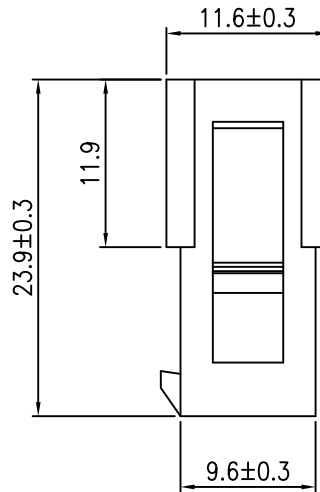
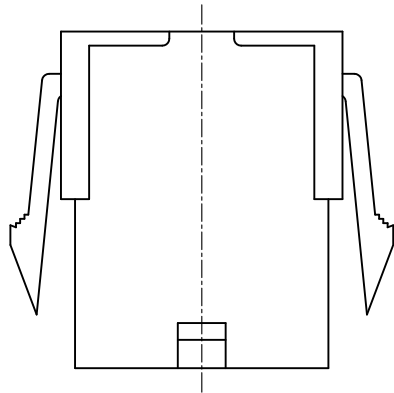
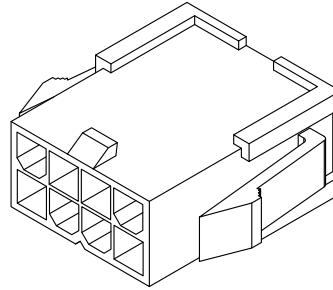
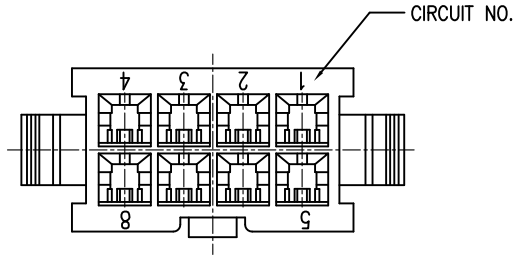
Young Yak Enterprise Co., Ltd.

TITLE			
4.20mm(.165") Pitch PLUG. SINGLE ROW			
VIEW	SCALE	PART NO.	REV.
	2:1	YY-5800-H**ASF*-***	A2
UNIT	SIZE	DWG NO.	SHEET
MM	A4	YY-5800-H**ASF*-014	1 OF 1

Young Yak
 2012.09.24
 ISSUED



C US E182481



RECOMMENDED PANEL CUT-OUT

PANEL MOUNT VERSION IS FOR USE WITH 0.80/2.00 THICK PANELS.
PANEL SHOULD BE PUNCHED IN THE DIRECTION OF CONNECTOR INSERTION.

REV	DESCRIPTION	DATE
A1	EN010903-1	2012.09.03

NOTES

Body: Nylon 66 UL 94V-0 OR 94V-2
 Available in 02 ~ 24 Circuits
 Mates with : YY-5700-H** Dual Row Connectors
 Use with : YY-5800-T Terminals
 Packing : Bag

ORDERING INFORMATION

YY - 5800 - H** AD * - ***
 1 2 3 4

1. No. of Circuits : 02 ~ 24

2. Housing Type
 AD : Dual Row / With ear

3. Material
 Q : Nylon 66 UL 94V-0
 □ : Nylon 66 UL 94V-2

4. Housing Color
 □ : Nature
 116 : RAL(1016) Sulphur yellow
 314 : RAL(3014) Antique pink
 512 : RAL(5012) Light blue

CIRCUIT NO.	A	B	C	D	CIRCUIT NO.	A	B	C	D
2	--	5.4±0.2	10.8	5.8	14	25.2±0.3	30.6±0.3	36	31.1
4	4.2±0.2	9.6±0.2	15	10	16	29.4±0.3	34.8±0.3	40.2	35.3
6	8.4±0.2	13.8±0.2	19.2	14.2	18	33.6±0.4	39.0±0.4	44.4	39.5
8	12.6±0.2	18.0±0.2	23.4	18.4	20	37.8±0.4	43.2±0.4	48.6	43.7
10	16.8±0.3	22.2±0.3	27.6	22.6	22	42.0±0.4	47.4±0.4	52.8	47.9
12	21.0±0.3	26.4±0.3	31.8	26.8	24	46.2±0.4	51.6±0.4	57.0	52.1

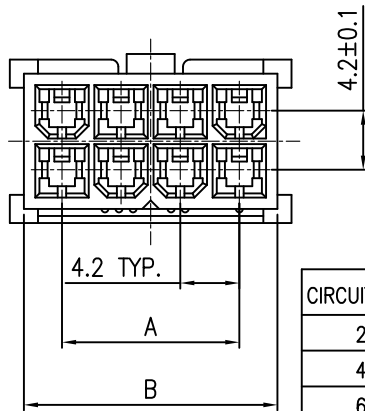
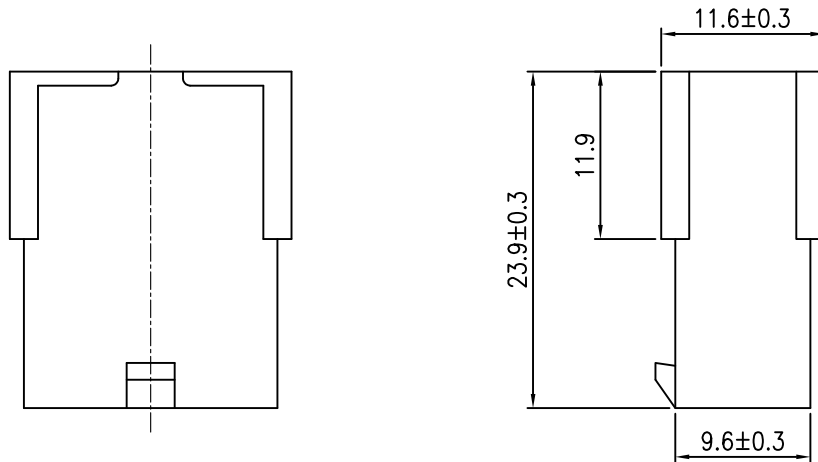
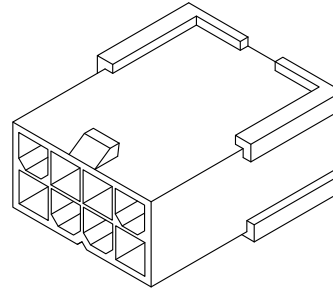
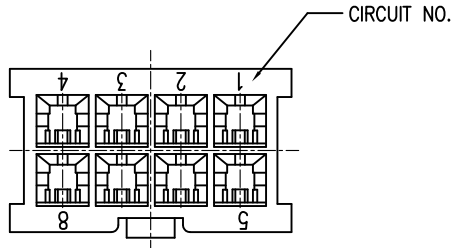
TOLERANCE X. -- X.X ±0.38 X.XX ±0.25 X.XXX ±0.10 ANGULAR ±1°		Young Yak Enterprise Co., Ltd. TITLE 4.20mm(.165") Pitch PLUG. DUAL ROW		
APPROVALS DRAWN Cherry 03-September-2012 CHECKED Kang 03-September-2012 APPROVED Denise 03-September-2012				
		UNIT MM SIZE A4 DWG NO. YY-5800-H**AD*-014 SHEET 1 OF 1		

Young Yak
 2012.09.24
 ISSUED



C US E182481

REV	DESCRIPTION	DATE
A1	EN010903-1	2012.09.03



CIRCUIT NO.	A	B	CIRCUIT NO.	A	B
2	--	5.4 ± 0.2	14	25.2 ± 0.3	30.6 ± 0.3
4	4.2 ± 0.2	9.6 ± 0.2	16	29.4 ± 0.3	34.8 ± 0.3
6	8.4 ± 0.2	13.8 ± 0.2	18	33.6 ± 0.4	39.0 ± 0.4
8	12.6 ± 0.2	18.0 ± 0.2	20	37.8 ± 0.4	43.2 ± 0.4
10	16.8 ± 0.3	22.2 ± 0.3	22	42.0 ± 0.4	47.4 ± 0.4
12	21.0 ± 0.3	26.4 ± 0.3	24	46.2 ± 0.4	51.6 ± 0.4

NOTES

Body: Nylon 66 UL 94V-0 OR 94V-2
 Available in 02 ~ 24 Circuits
 Mates with : YY-5700-H** Dual Row Connectors
 Use with : YY-5800-T Terminals
 Packing : Bag

ORDERING INFORMATION

YY - 5800 - H** ADF * - ***
 1 2 3 4

- No. of Circuits : 02 ~ 24
- Housing Type
ADF : Dual Row / Without ear
- Material
 Q : Nylon 66 UL 94V-0
 □ : Nylon 66 UL 94V-2
- Housing Color
 □ : Nature
 116 : RAL(1016) Sulphur yellow
 314 : RAL(3014) Antique pink
 512 : RAL(5012) Light blue

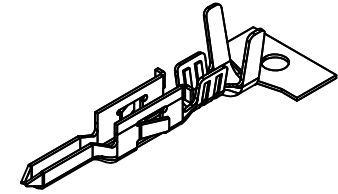
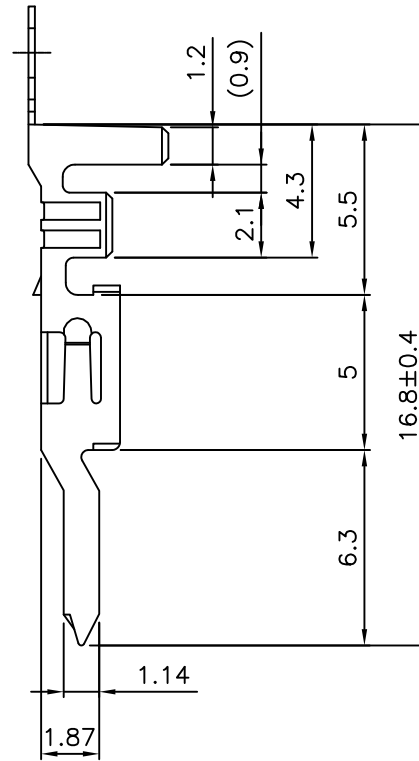
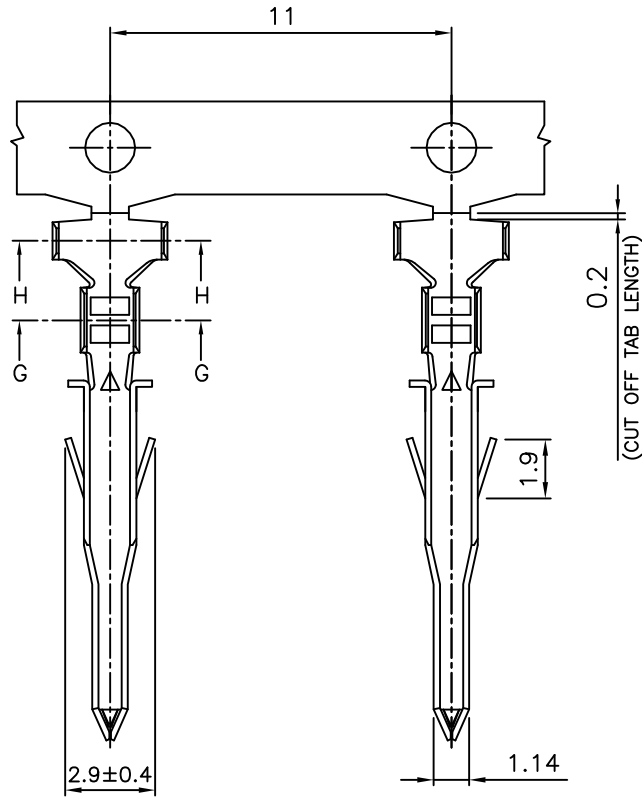
TOLERANCE	
X.	--
X.X	± 0.38
X.XX	± 0.25
X.XXX	± 0.10
ANGULAR	$\pm 1^\circ$



TITLE: 4.20mm(.165") Pitch PLUG. DUAL ROW

VIEW	SCALE	PART NO.	REV.
	2:1	YY-5800-H**ADF*-***	A1
UNIT	SIZE	DWG NO.	SHEET
MM	A4	YY-5800-H**ADF*-014	1 OF 1





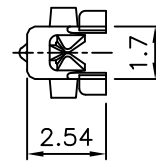
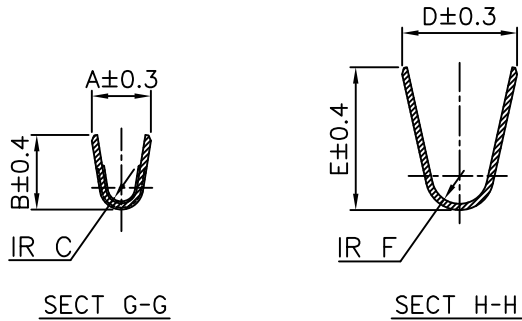
NOTES

Used in YY-5800-H Housing
 Material : Brass or Phosphor Bronze
 Finish : See Dimensions List
 Thickness: 0.2mm

ORDERING INFORMATION

YY-5800 - T TB * *A *
 1 2 3 4

1. PLATED & METHOD
 TB : Tin , Post-Plated
2. MATERIAL:
 (SEE DIMENSIONS LIST)
3. WIRE RANGE
 LA : AWG #16
 MA : AWG #18-22
 SA : AWG #22-26
4. SELECTIVE GOLD PLATED :
 (SEE DIMENSIONS LIST)



TOLERANCE	
X.	--
X.X	±0.30
X.XX	±0.25
X.XXX	±0.20
ANGULAR	--



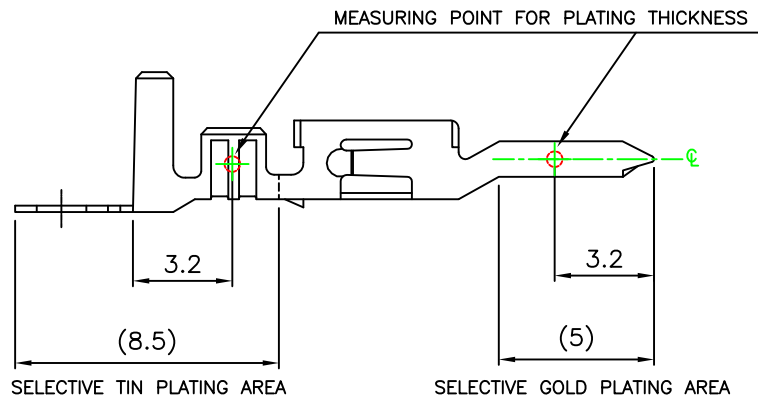
TITLE
 4.20mm(.165") Pitch
 Power Connector Terminal


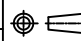
APPROVALS		VIEW	SCALE	PART NO.	REV.
DRAWN	Denise		F	YY-5800-TTB*A*	A1
CHECKED	Kang				
APPROVED	Jessica	UNIT	SIZE	DWG NO.	SHEET
		MM	A4	YY-5800-TTB*A*-096	1 OF 3



DIMENSIONS LIST



MATERIAL	FINISH	WIRE RANGE	INS.RANGE	A	B	C	D	E	F	PART NO.
BRASS	TIN 100 μ " ALL OVER NICKEL 30 μ " PLATED (POST-PLATED)	#16	ϕ 3.1 Max.	2.3	2.7	0.6	3.6	4.5	0.9	YY-5800-TTBLA
		#18-22	ϕ 1.3-3.1	1.9	2.3	0.5	3.6	4.5	0.9	YY-5800-TTBMA
		#22-26	ϕ 0.9-1.8	1.8	1.65	0.4	2.3	2.3	0.6	YY-5800-TTBSA
	SELECTIVE GOLD 1.2 μ " & SELECTIVE TIN 100 μ " OVER NICKEL 30 μ " PLATED (POST-PLATED)	#16	ϕ 3.1 Max.	2.3	2.7	0.6	3.6	4.5	0.9	YY-5800-TTBLA7
		#18-22	ϕ 1.3-3.1	1.9	2.3	0.5	3.6	4.5	0.9	YY-5800-TTBMA7
		#22-26	ϕ 0.9-1.8	1.8	1.65	0.4	2.3	2.3	0.6	YY-5800-TTBSA7
	SELECTIVE GOLD 15 μ " & SELECTIVE TIN 100 μ " OVER NICKEL 30 μ " PLATED (POST-PLATED)	#16	ϕ 3.1 Max.	2.3	2.7	0.6	3.6	4.5	0.9	YY-5800-TTBLA8
		#18-22	ϕ 1.3-3.1	1.9	2.3	0.5	3.6	4.5	0.9	YY-5800-TTBMA8
		#22-26	ϕ 0.9-1.8	1.8	1.65	0.4	2.3	2.3	0.6	YY-5800-TTBSA8
	SELECTIVE GOLD 30 μ " & SELECTIVE TIN 100 μ " OVER NICKEL 30 μ " PLATED (POST-PLATED)	#16	ϕ 3.1 Max.	2.3	2.7	0.6	3.6	4.5	0.9	YY-5800-TTBLA9
		#18-22	ϕ 1.3-3.1	1.9	2.3	0.5	3.6	4.5	0.9	YY-5800-TTBMA9
		#22-26	ϕ 0.9-1.8	1.8	1.65	0.4	2.3	2.3	0.6	YY-5800-TTBSA9



TOLERANCE		 Young Yak Enterprise Co., Ltd.			
X.	--	TITLE 4.20mm(.165") Pitch Power Connector Terminal			
X.X	\pm 0.30				
X.XX	\pm 0.25				
X.XXX	\pm 0.20				
ANGULAR	--				
APPROVALS					
DRAWN	Denise 30-September-2009	VIEW	SCALE	PART NO.	REV.
CHECKED	Kang 30-September-2009		F	YY-5800-TTB*A*	A1
APPROVED	Jessica 30-September-2009	UNIT	SIZE	DWG NO.	SHEET
		MM	A4	YY-5800-TTB*A*-096	2 OF 3

DIMENSIONS LIST

MATERIAL	FINISH	WIRE RANGE	INS.RANGE	A	B	C	D	E	F	PART NO.
PHOSPHOR BRONZE	TIN 100 μ " ALL OVER NICKEL 30 μ " PLATED (POST-PLATED)	#16	ϕ 3.1 Max.	2.3	2.7	0.6	3.6	4.5	0.9	YY-5800-TTBPLA
		#18-22	ϕ 1.3-3.1	1.9	2.3	0.5	3.6	4.5	0.9	YY-5800-TTBPMA
		#22-26	ϕ 0.9-1.8	1.8	1.65	0.4	2.3	2.3	0.6	YY-5800-TTBPSA
	SELECTIVE GOLD 1.2 μ " & SELECTIVE TIN 100 μ " OVER NICKEL 30 μ " PLATED (POST-PLATED)	#16	ϕ 3.1 Max.	2.3	2.7	0.6	3.6	4.5	0.9	YY-5800-TTBPLA7
		#18-22	ϕ 1.3-3.1	1.9	2.3	0.5	3.6	4.5	0.9	YY-5800-TTBPMA7
		#22-26	ϕ 0.9-1.8	1.8	1.65	0.4	2.3	2.3	0.6	YY-5800-TTBPSA7
	SELECTIVE GOLD 15 μ " & SELECTIVE TIN 100 μ " OVER NICKEL 30 μ " PLATED (POST-PLATED)	#16	ϕ 3.1 Max.	2.3	2.7	0.6	3.6	4.5	0.9	YY-5800-TTBPLA8
		#18-22	ϕ 1.3-3.1	1.9	2.3	0.5	3.6	4.5	0.9	YY-5800-TTBPMA8
		#22-26	ϕ 0.9-1.8	1.8	1.65	0.4	2.3	2.3	0.6	YY-5800-TTBPSA8
	SELECTIVE GOLD 30 μ " & SELECTIVE TIN 100 μ " OVER NICKEL 30 μ " PLATED (POST-PLATED)	#16	ϕ 3.1 Max.	2.3	2.7	0.6	3.6	4.5	0.9	YY-5800-TTBPLA9
		#18-22	ϕ 1.3-3.1	1.9	2.3	0.5	3.6	4.5	0.9	YY-5800-TTBPMA9
		#22-26	ϕ 0.9-1.8	1.8	1.65	0.4	2.3	2.3	0.6	YY-5800-TTBPSA9

TOLERANCE		 Young Yak Enterprise Co., Ltd. TITLE 4.20mm(.165") Pitch Power Connector Terminal			
X.	--				
X.X	\pm 0.30				
X.XX	\pm 0.25				
X.XXX	\pm 0.20				
ANGULAR	--				
APPROVALS					
DRAWN	Denise 30-September-2009	VIEW	SCALE	PART NO.	REV.
CHECKED	Kang 30-September-2009		F	YY-5800-TTB*A*	A1
APPROVED	Jessica 30-September-2009	UNIT	SIZE	DWG NO.	SHEET
		MM	A4	YY-5800-TTB*A*-096	3 OF 3