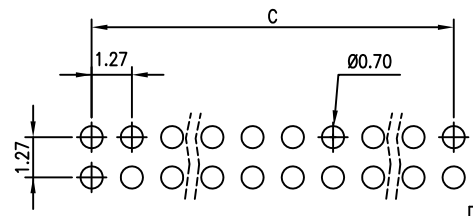
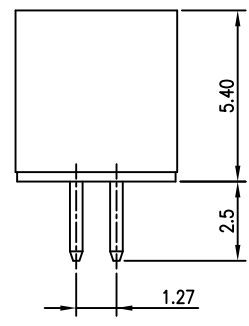
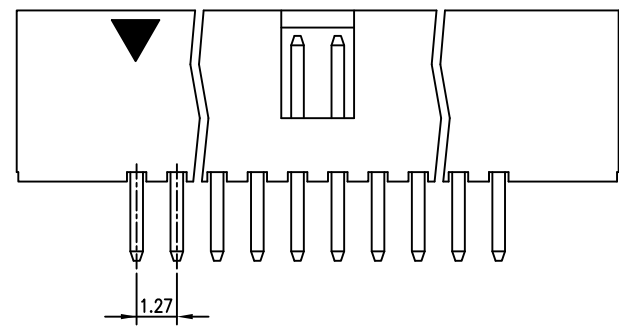
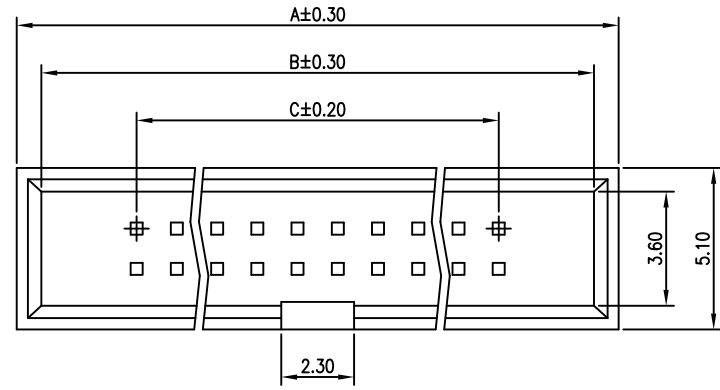


RoHS compliant

REV	DESCRIPTION	DATE



PCB Layout (Top View)

NOTES

Available in 06 through 100 Circuits
 Material: LCP UL94V-0 , Black
 0.40mm(.016") Square Pin
 Pin Material: Copper Alloy/Gold-flash

SPECIFICATION:

Current rating: 1.0 Amp. Max.
 Insulation Resistance: 1000MΩ Min. at 500V DC.
 Dielectric Withstanding Voltage: 600V AC/minute
 Operation temperature: -55°C to +105°C

ORDERING INFORMATION:

YY - 4751 - XX S G
 1 2 3

- No. of Circuits : 06 ~ 100 Pin
- Connect Type
S : Straight
- Plating
G : Gold-flash

Circuits	Dimension mm			Circuits	Dimension mm			TOLERANCE	
	A	B	C		A	B	C	X.	--
2X3	10.11	8.56	2.54	2X17	27.89	26.34	20.32	X.X	±0.30
2X5	12.65	11.10	5.08	2X20	31.70	30.15	24.13	X.XX	±0.20
2X6	13.92	12.37	6.35	2X22	34.24	32.69	26.67	X.XXX	±0.10
2X7	15.19	13.64	7.62	2X25	38.05	36.50	30.48	ANGULAR	--
2X8	16.46	14.91	8.89	2X30	44.40	42.85	36.83	APPROVALS	
2X10	19.00	17.45	11.43	2X32	46.94	45.39	39.37	DRAWN	Frank
2X12	21.54	19.99	13.97	2X34	49.48	47.93	41.91	28-AUG-2008	
2X13	22.81	21.26	15.24	2X40	57.10	55.55	49.53	CHECKED	Denise
2X14	24.08	22.53	16.51	2X50	69.80	68.25	62.23	28-AUG-2008	
2X15	25.35	23.80	17.78					APPROVED	Jessica
								28-AUG-2008	



TITLE 1.27*1.27mm Box Header
 PCB Mount Vertical, Dual Rows

VIEW	SCALE	PART NO.	REV.
	1:1	YY-4751-XXSG	A0
UNIT	SIZE	DWG NO.	SHEET
MM	A4	YY-4751-XXSG-048	1 OF 1



RoHS compliant

REV	DESCRIPTION	DATE

NOTES

Available in 10 through 100 Circuits
 Material: Thermoplastic UL94V-0 , Black
 0.40mm(.016") Square Pin
 Pin Material: Copper Alloy/Gold-flash

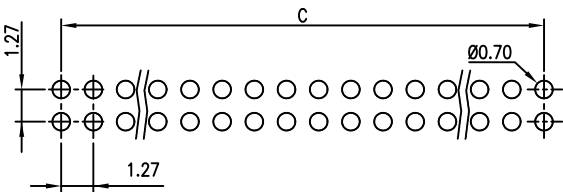
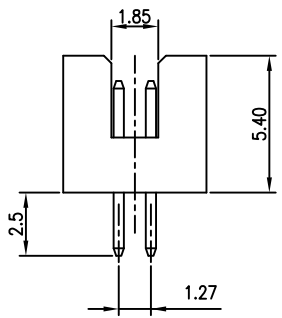
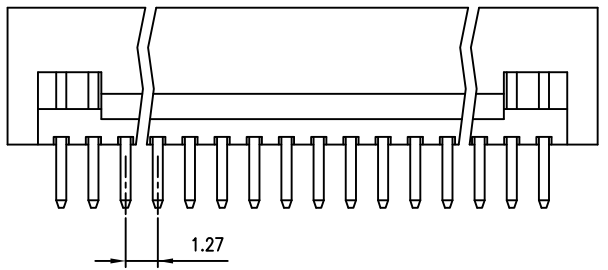
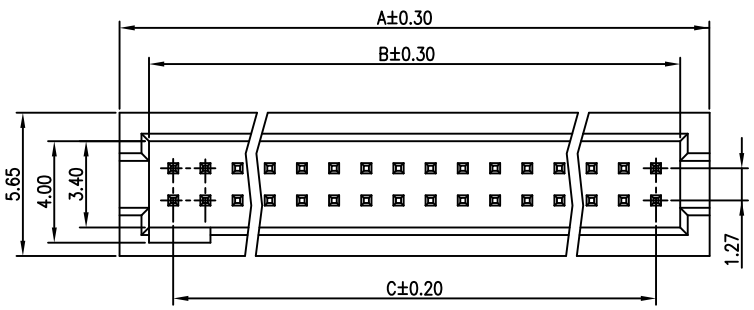
SPECIFICATION:

Current rating: 1.0 Amp. Max.
 Insulation Resistance: 1000MΩ Min. at 500V DC.
 Dielectric Withstanding Voltage: 600V AC/minute
 Operation temperature: -55°C to +105°C

ORDERING INFORMATION:

YY - 4751 - $\frac{XX}{1}$ A $\frac{S}{2}$ $\frac{G}{3}$

- No. of Circuits : 10 ~ 100 Pin
- Connect Type
S : Straight
G : Gold-flash
- Plating



PCB Layout (Top View)

Circuits	Dimension mm			Circuits	Dimension mm			Circuits	Dimension mm			Circuits	Dimension mm			TOLERANCE
	A	B	C		A	B	C		A	B	C		A	B	C	
2X5	9.41	6.99	5.08	2X17	24.65	22.23	20.32	2X29	39.89	37.47	35.56	2X41	55.13	52.71	50.80	X. --
2X6	10.68	8.26	6.35	2X18	25.92	23.50	21.59	2X30	41.16	38.74	36.83	2X42	56.40	53.98	52.07	X.X ±0.30
2X7	11.95	9.53	7.62	2X19	27.19	24.77	22.86	2X31	42.43	40.01	38.10	2X43	57.67	55.25	53.34	X.XX ±0.20
2X8	13.22	10.80	8.89	2X20	28.46	26.04	24.13	2X32	43.70	41.28	39.37	2X44	58.94	56.52	54.61	X.XXX ±0.10
2X9	14.49	12.07	10.16	2X21	29.73	27.31	25.40	2X33	44.97	42.55	40.64	2X45	60.21	57.79	55.88	ANGULAR --
2X10	15.76	13.34	11.43	2X22	31.00	28.58	26.67	2X34	46.24	43.82	41.91	2X46	61.48	59.06	57.15	APPROVALS
2X11	17.03	14.61	12.70	2X23	32.27	29.85	27.94	2X35	47.51	45.09	43.18	2X47	62.75	60.33	58.42	DRAWN Frank
2X12	18.30	15.88	13.97	2X24	33.54	31.12	29.21	2X36	48.78	46.36	44.45	2X48	64.02	61.60	59.69	28-AUG-2008
2X13	19.57	17.15	15.24	2X25	34.81	32.39	30.48	2X37	50.05	47.63	45.72	2X49	65.29	62.87	60.96	CHECKED Denise
2X14	20.84	18.42	16.51	2X26	36.08	33.66	31.75	2X38	51.32	48.90	46.99	2X50	66.56	64.14	62.23	28-AUG-2008
2X15	22.11	19.69	17.78	2X27	37.35	34.93	33.02	2X39	52.59	50.17	48.26					APPROVED Jessica
2X16	23.38	20.96	19.05	2X28	38.62	36.20	34.29	2X40	53.86	51.44	49.53					28-AUG-2008

Young Yak Enterprise Co., Ltd.

TITLE: 1.27*1.27mm Box Header
 PCB Mount Vertical, Dual Rows

VIEW	SCALE	PART NO.	REV.
	F	YY-4751-XXASG	A0
UNIT	SIZE	DWG NO.	SHEET
MM	A4	YY-4751-XXASG-048	1 OF 1

