

Recommended panel slot

REV	DESCRIPTION	DATE
A1	EN031226-1	2013/12/26

NOTES

Available in 02 through 12 Circuits
 Material: Nylon 66 UL94V-0
 Accepts YY-1650-TM Crimp Terminal
 Mates with YY-1650-HXXM Series Housing

SPECIFICATION

Voltage rating: 250V AC/DC
 Current rating: 3A
 Insulation Resistance: 1000MΩ Min.
 Dielectric Withstanding Voltage: 1500V AC/minute
 Operation temperature: -40°C to +105°C

ORDERING INFORMATION

YY-1650 - H XX F X
 1 2 3 4

- H : Housing
- No. of Circuits 02~12
- Housing Type
F : Female
- Ears Option
□ : W/O Ears
E : W/ Ears

Circuits	Dimension mm						Circuits	Dimension mm					
	A	B	C	D	E	F		A	B	C	D	E	F
2	2.5	6.2	8.6	2.5	5.8	12.4	8	17.5	21.2	23.6	5.0	20.8	27.4
3	5.0	8.7	11.1	5.0	8.3	14.9	9	20.0	23.7	26.1	5.0	23.3	29.9
4	7.5	11.2	13.6	7.5	10.8	17.4	10	22.5	26.2	28.6	5.0	25.8	32.4
5	10.0	13.7	16.1	3.7	13.3	19.9	11	25.0	28.7	31.1	5.0	28.3	34.9
6	12.5	16.2	18.6	5.0	15.8	22.4	12	27.5	31.2	33.6	5.0	30.8	37.4
7	15.0	18.7	21.1	5.0	18.3	24.9	---	---	---	---	---	---	---

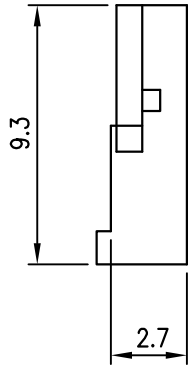
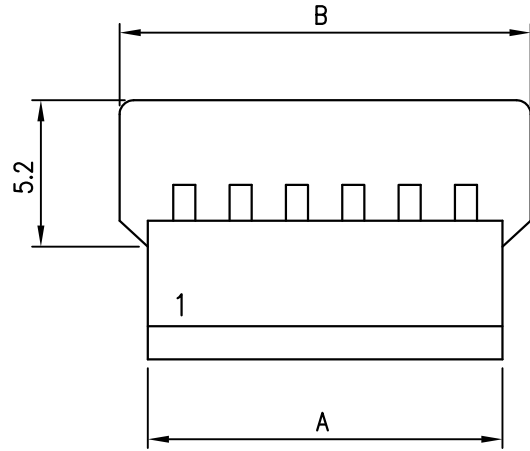
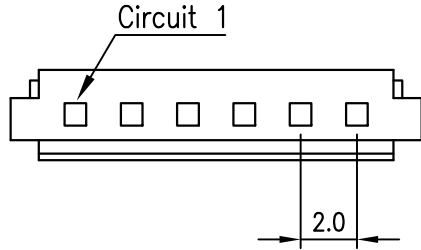
TOLERANCE					
X.	--	TITLE 2.50mm(.098") Pitch Wire to Wire Female Housing			
X.X	±0.40				
X.XX	±0.25				
X.XXX	±0.08				
ANGULAR	--				
APPROVALS					
DRAWN	Denise 26-December-2013	VIEW	SCALE	PART NO.	REV.
CHECKED	Kang 26-December-2013		F	YY-1650-HXXF	A1
APPROVED	Jessica 26-December-2013	UNIT	SIZE	DWG NO.	SHEET
		MM	A4	YY-1650-HXXF-086	1 OF 1





C US E182481

REV	DESCRIPTION	DATE



NOTES

Available in 02 through 10 Circuits
 Material: Nylon 66 UL94-V0
 Accepts YY-3600-TF Crimp Terminal
 Mates with YY-3600-HF Series Housing

ORDERING INFORMATION

YY - 3600 - H ** M
 1 2 3

- 1. H : Housing
- 2. No. of Circuits : 02 ~ 10 Pin
- 3. Housing Type
 M : Male

Circuits	Dimension		Circuits	Dimension	
	A	B		A	B
2	4.6	6.6	7	14.6	16.6
3	6.6	8.6	8	16.6	18.6
4	8.6	10.6	9	18.6	20.6
5	10.6	12.6	10	20.6	22.6
6	12.6	14.6	--	--	--

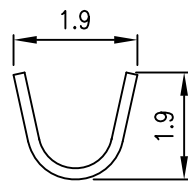
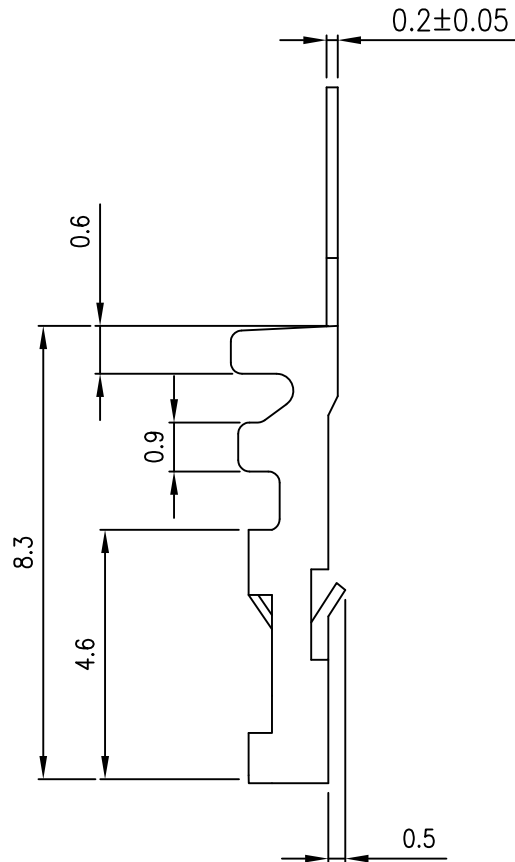
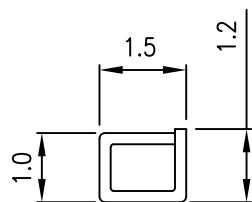
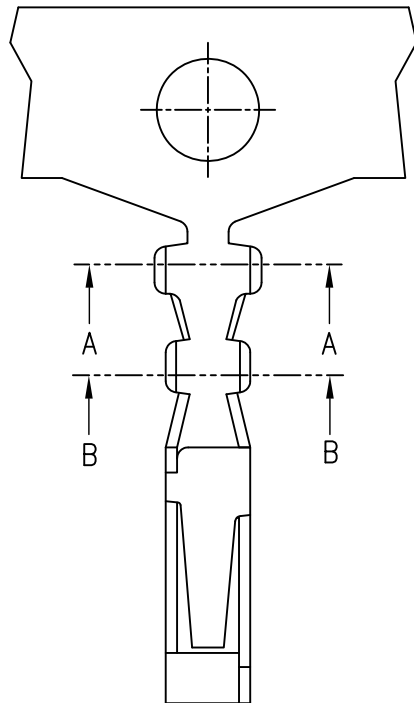
TOLERANCE					
X.	--	TITLE 2.0mm(.079") Pitch Wire to Wire Male Housing			
X.X	±0.30				
X.XX	±0.20				
X.XXX	±0.10				
ANGULAR	--				
APPROVALS		VIEW SCALE F PART NO. YY-3600-H**M REV. A0			
DRAWN Frank 19-September-2009	CHECKED Denise 19-September-2009	UNIT MM	SIZE A4	DWG NO. YY-3600-H**M-128	SHEET 1 OF 1



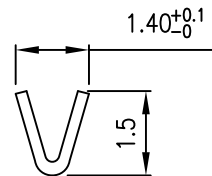


C **YAK** US E182481

REV	DESCRIPTION	DATE



A-A



B-B

NOTES

YY-3600-TF mates with
 YY-3600-H**M series housing
 Accepts AWG 24~28 wire range
 Insulation: O.D.=1.50mm(max)
 Material : Brass
 Finish : Tin-plated
 Qty/reel : 10,000 PCS
 Thickness: 0.2mm

ORDERING INFORMATION

YY - 3600 - $\frac{T}{1}$ $\frac{F}{2}$ $\frac{TA}{3}$

1. T : Terminal
2. Type
 F : Female Type
3. TA : Tin , Pre-tinned

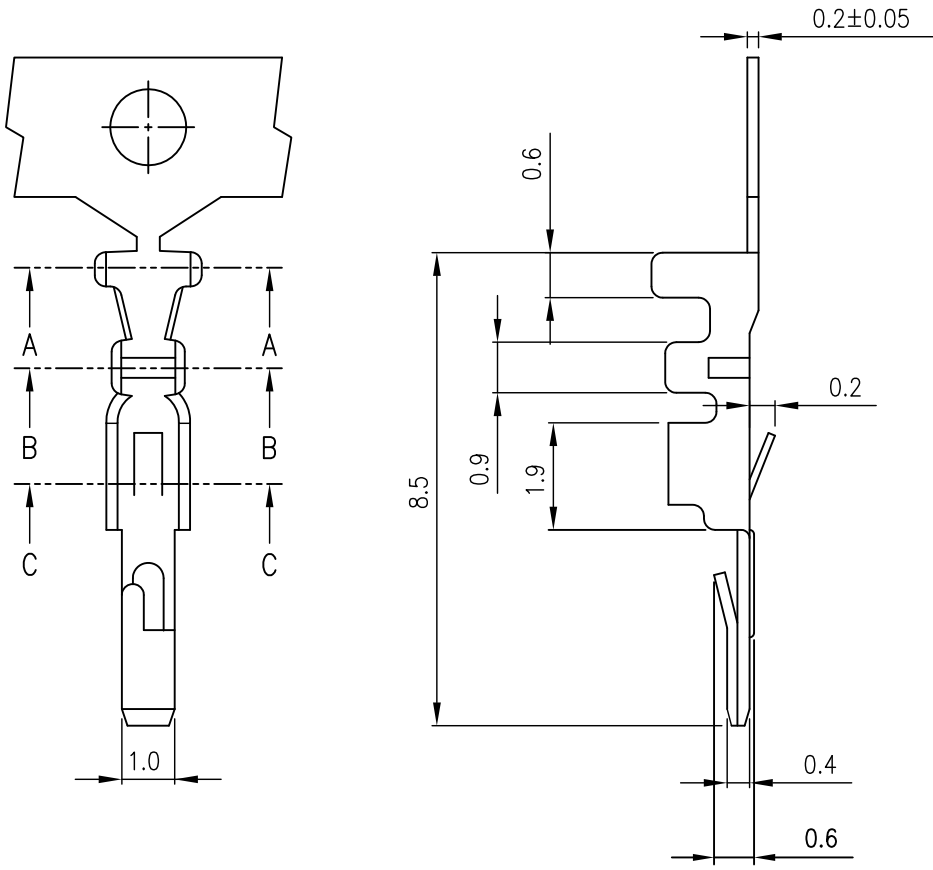


TOLERANCE					
X.	--	TITLE 2.0mm(.079") Pitch Wire to Wire Female Terminal			
X.X	±0.30				
X.XX	±0.20				
X.XXX	±0.10				
ANGULAR	--				
APPROVALS					
DRAWN	Frank 19-September-2009	VIEW	SCALE	PART NO.	REV.
CHECKED	Denise 19-September-2009		F	YY-3600-TFTA	AO
APPROVED	Jessica 19-September-2009	UNIT	SIZE	DWG NO.	SHEET
		MM	A4	YY-3600-TFTA-128	1 OF 1



C **YAK** US E182481

REV	DESCRIPTION	DATE



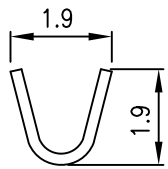
NOTES

YY-3600-TM mates with
 YY-3600-H**F series housing
 Accepts AWG 24~28 wire range
 Insulation: O.D.=1.50mm(max)
 Material : Brass
 Finish : Tin-plated
 Qty/reel : 10,000 PCS
 Thickness: 0.2mm

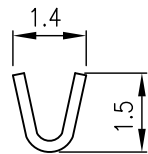
ORDERING INFORMATION

YY - 3600 - $\frac{T}{1}$ $\frac{M}{2}$ $\frac{TA}{3}$

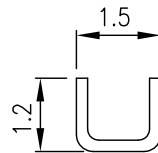
1. T : Terminal
2. Type
M : Male
3. TA : Tin , Pre-tinned



A-A



B-B



C-C



TOLERANCE	
X.	--
X.X	±0.30
X.XX	±0.20
X.XXX	±0.10
ANGULAR	--
APPROVALS	
DRAWN	Frank 19-September-2009
CHECKED	Denise 19-September-2009
APPROVED	Jessica 19-September-2009



Young Yak Enterprise Co., Ltd.

TITLE
 2.0mm(.079") Pitch
 Wire to Wire Male Terminal

DRAWN	VIEW	SCALE	PART NO.	REV.
Frank 19-September-2009		F	YY-3600-TMTA	AO
CHECKED	UNIT	SIZE	DWG NO.	SHEET
Denise 19-September-2009	MM	A4	YY-3600-TMTA-128	1 OF 1