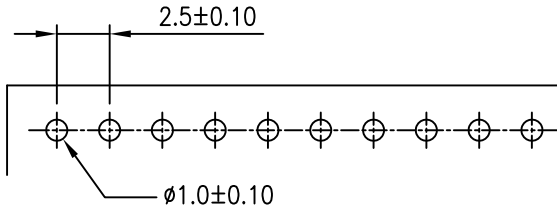
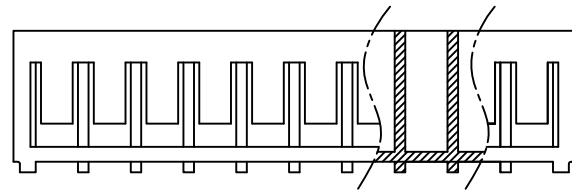
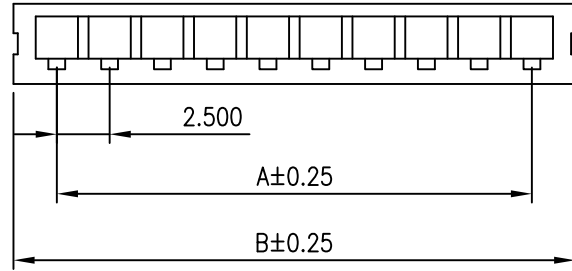




C **YI** US E182481

| REV | DESCRIPTION | DATE |
|-----|-------------|------|
|     |             |      |



P.C.B LAYOUT

**NOTES**

Available in 02 through 16 Circuits  
 Material: Nylon 66 UL94-V0  
 Accepts YY-1000A-T Crimp Terminal  
 Color: White

**ORDERING INFORMATION**

**YY-1000A - H \*\***  
**1 2**

1. H : Housing
2. No. of Circuits 02~16

| Circuits | Dimension |       | Circuits | Dimension |       |
|----------|-----------|-------|----------|-----------|-------|
|          | A         | B     |          | A         | B     |
| 2        | 2.50      | 6.60  | 10       | 22.50     | 26.60 |
| 3        | 5.00      | 9.10  | 11       | 25.00     | 29.10 |
| 4        | 7.50      | 11.60 | 12       | 27.50     | 31.60 |
| 5        | 10.00     | 14.10 | 13       | 30.00     | 34.10 |
| 6        | 12.50     | 16.60 | 14       | 32.50     | 36.60 |
| 7        | 15.00     | 19.10 | 15       | 35.00     | 39.10 |
| 8        | 17.50     | 21.60 | 16       | 37.50     | 41.60 |
| 9        | 20.00     | 24.10 | --       | --        | --    |

|  |              |                             |                 |  |
|--|--------------|-----------------------------|-----------------|--|
| <b>TOLERANCE</b><br>X. --<br>X.X ±0.25<br>X.XX ±0.15<br>X.XXX ±0.05<br>ANGULAR --  |              |                             |                 |  |
| <b>APPROVALS</b><br>DRAWN Frank<br>21-SEPTEMBER-2009<br>CHECKED Denise<br>21-SEPTEMBER-2009<br>APPROVED Jessica<br>21-SEPTEMBER-2009 |              |                             |                 |  |
| VIEW<br>   | SCALE<br>3:1 | PART NO.<br>YY-1000A-H**    | REV.<br>A0      |  |
| UNIT<br>MM   | SIZE<br>A4   | DWG NO.<br>YY-1000A-H**-014 | SHEET<br>1 OF 1 |  |





C **YI** US E182481

| REV | DESCRIPTION | DATE |
|-----|-------------|------|
|     |             |      |

### NOTES

Used in YY-1000A-H Series Housing  
 Accepts AWG #22~28 Wire Range  
 Insulation O.D.= 1.90mm(max)  
 Material : Brass or Phosphor Bronze  
 Finish : Tin-Plated  
 Qty/Reel : 10,000 PCS  
 Thickness: 0.2mm

### ORDERING INFORMATION

YY-1000A- T TB \*  
                   1 2 3

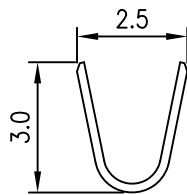
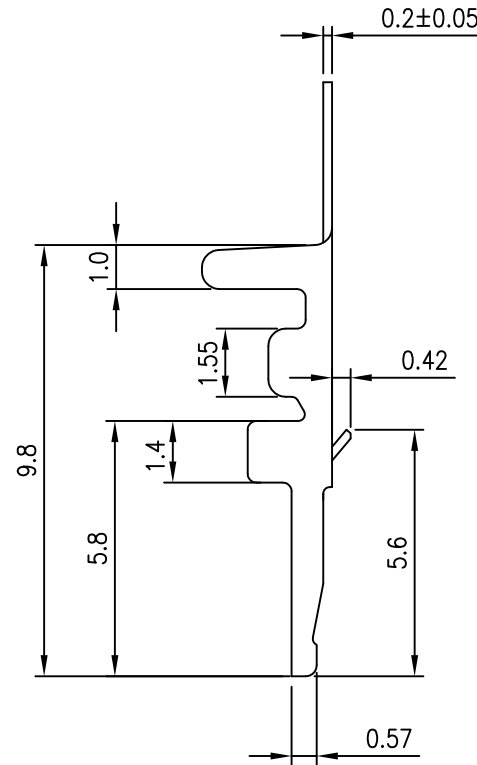
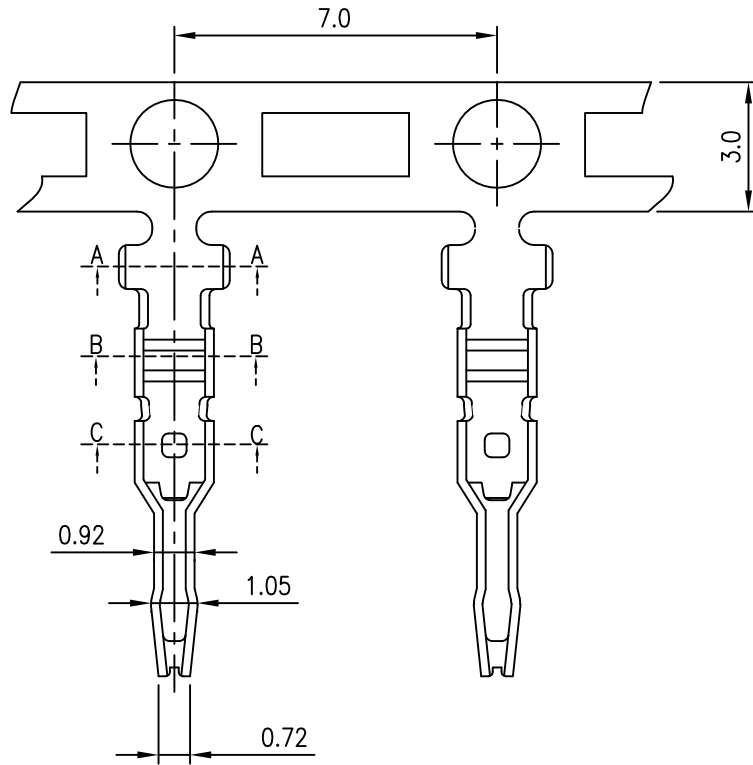
1. T : Terminal

2. TB : Tin-Plated

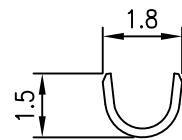
3. Material :

□ : Brass

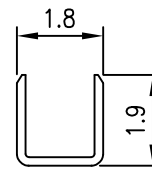
P : Phosphor Bronze



A-A



B-B



C-C



| TOLERANCE |       |
|-----------|-------|
| X.        | --    |
| X.X       | ±0.20 |
| X.XX      | ±0.10 |
| X.XXX     | ±0.05 |
| ANGULAR   | --    |



**Young Yak Enterprise Co., Ltd.**

TITLE  
 2.50mm(.098") Pitch  
 Board to Board Terminal

| APPROVALS |         | VIEW | SCALE | PART NO.          | REV.   |
|-----------|---------|------|-------|-------------------|--------|
| DRAWN     | Frank   |      | F     | YY-1000A-TTB*     | A0     |
| CHECKED   | Denise  |      |       |                   |        |
| APPROVED  | Jessica | UNIT | SIZE  | DWG NO.           | SHEET  |
|           |         | MM   | A4    | YY-1000A-TTB*-014 | 1 OF 1 |