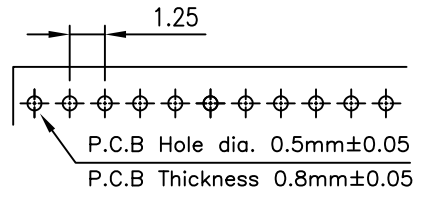
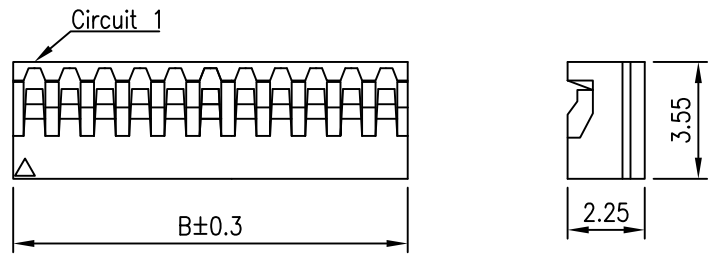
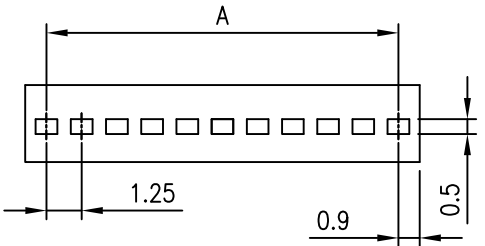


RoHS compliant

REV	DESCRIPTION	DATE



P.C.B LAYOUT

**NOTES**


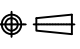
Available in 2 through 15 Circuits  
 Material: Nylon 66 UL94V-0  
 Accepts YY-0700-T Crimp Terminal

**ORDERING INFORMATION**

YY-0700 - H XX  
 1 2

1. H : Housing
2. No. of Circuits 02~15

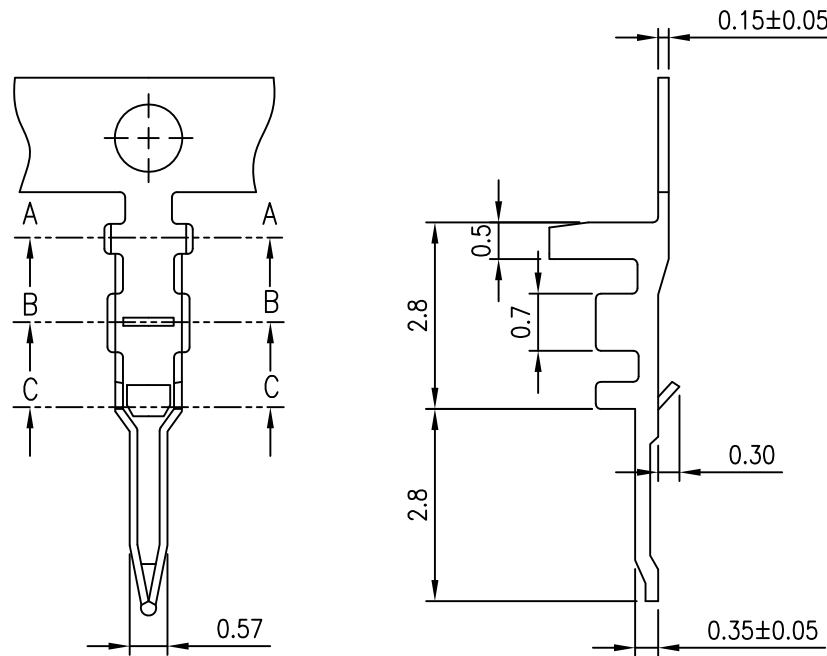
Circuits	Dimension		Circuits	Dimension	
	A	B		A	B
2	1.25	3.05	9	11.25	11.80
3	2.50	4.30	10	12.50	13.05
4	3.75	5.55	11	13.75	14.30
5	5.00	6.80	12	16.25	15.55
6	6.25	8.05	13	17.50	16.80
7	7.50	9.30	14	16.25	18.05
8	8.75	10.55	15	17.50	19.30

TOLERANCE		 <b>Young Yak Enterprise Co., Ltd.</b> TITLE 1.25mm(.049") Pitch Board to Board Housing			
X.	--				
X.X	±0.30				
X.XX	±0.20				
X.XXX	--				
ANGULAR		--			
APPROVALS					
DRAWN	Frank	VIEW	SCALE	PART NO.	REV.
	15-SEPTEMBER-2008		F	YY-0700-HXX	A0
CHECKED	Denise	UNIT	SIZE	DWG NO.	SHEET
	15-SEPTEMBER-2008	MM	A4	YY-0700-HXX-043	1 OF 1
APPROVED	Jessica				
	15-SEPTEMBER-2008				



RoHS compliant

REV	DESCRIPTION	DATE



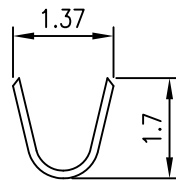
**NOTES**

Used in YY-0700-H Series Housing  
 Accepts AWG 28~32 Wire Range  
 Insulation O.D.= 1.04 mm(max)  
 Material : Phosphor Bronze  
 Finish : Tin-Plated  
 Qty/Reel : 15,000 PCS  
 Thickness: 0.15mm

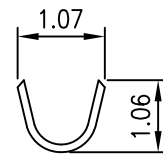
**ORDERING INFORMATION**

YY-0700 - T TA P  
                   1 2 3

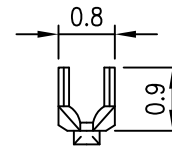
1. T : Terminal
2. TA : Tin , Pre-tinned
3. Material  
     P : Phosphor bronze



A-A



B-B



C-C

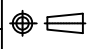
TOLERANCE	
X.	--
X.X	±0.25
X.XX	±0.10
X.XXX	±0.05
ANGULAR	--



**Young Yak Enterprise Co., Ltd.**

TITLE  
 1.25mm(.049") Pitch  
 Board to Board Terminal

APPROVALS	
DRAWN	Frank
15-SEPTEMBER-2008	
CHECKED	Denise
15-SEPTEMBER-2008	
APPROVED	Jessica
15-SEPTEMBER-2008	

VIEW	SCALE	PART NO.	REV.
	F	YY-0700-TTAP	A0
UNIT	SIZE	DWG NO.	SHEET
MM	A4	YY-0700-TTAP-043	1 OF 1

