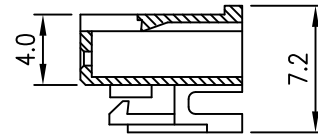
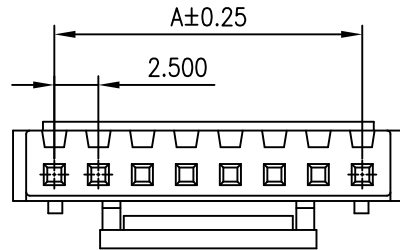




C **YI** US E182481

REV	DESCRIPTION	DATE



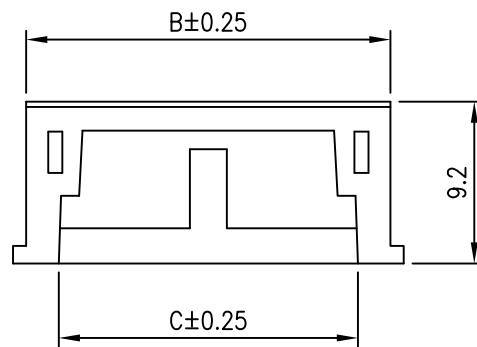
**NOTES**

Available in 02 through 16 Circuits  
 Material: Nylon 66 UL94-V0  
 Accepts YY-1300-T Crimp Terminal  
 Mates with YY-1300-W\*\*S or YY-1300-W\*\*R Series Header

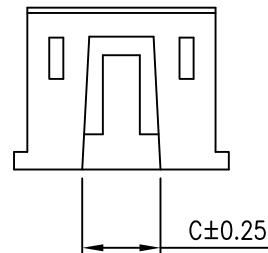
**ORDERING INFORMATION**

**YY-1300 - H \*\* L**  
                   1 2 3

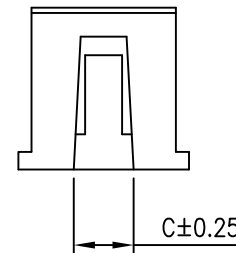
1. H : Housing
2. No. of Circuits 02~16
3. L : Lock



07~16P



04~06P



02~03P

Circuits	Dimension mm			Circuits	Dimension mm		
	A	B	C		A	B	C
2	2.50	5.70	2.10	10	22.50	25.70	7.25
3	5.00	8.20	3.40	11	25.00	28.20	16.95
4	7.50	10.70	3.40	12	27.50	30.70	16.95
5	10.00	13.20	4.45	13	30.00	33.20	16.95
6	12.50	15.70	4.45	14	32.50	35.70	17.25
7	15.00	18.20	6.55	15	35.00	38.20	19.75
8	17.50	20.70	6.55	16	37.50	40.70	19.75
9	20.00	23.20	7.25	--	--	--	--

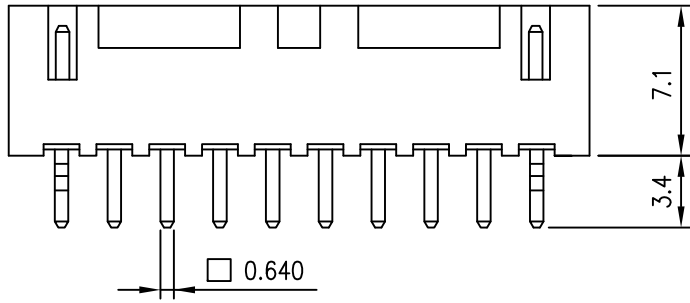
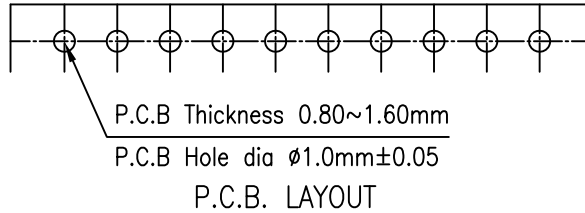
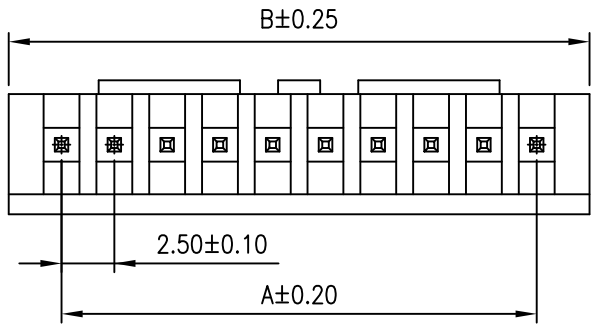
TOLERANCE					
X.	--	<b>Young Yak Enterprise Co., Ltd.</b> TITLE 2.5mm(.098") Pitch Wire to Board Housing			
X.X	±0.25				
X.XX	±0.15				
X.XXX	±0.05				
ANGULAR	--				
APPROVALS					
DRAWN	Frank	VIEW	SCALE	PART NO.	REV.
	22-September-2009		F	YY-1300-H**L	A0
CHECKED	Denise	UNIT	SIZE	DWG NO.	SHEET
	22-September-2009	MM	A4	YY-1300-H**L-014	1 OF 1
APPROVED	Jessica				
	22-September-2009				



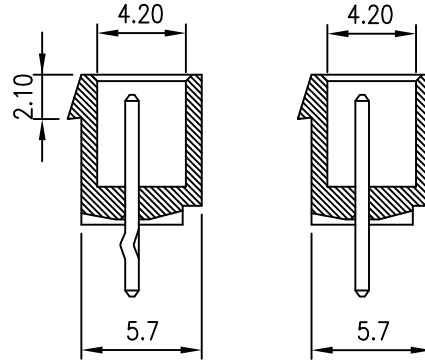


C **RI** US E182481

REV	DESCRIPTION	DATE



07~16Pin



Standard

Without Kink

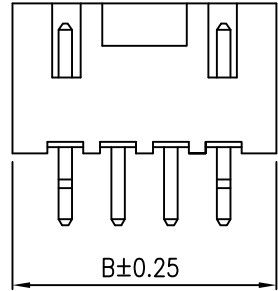
**NOTES**

Available in 02 through 16 Circuits  
Material: Nylon 66 UL94-V0  
Mates with YY-1300-H\*\*L Series Housing  
0.64mm(.025") Square Pin  
Pin Material: Brass/Tin-Plated or Gold-Plated

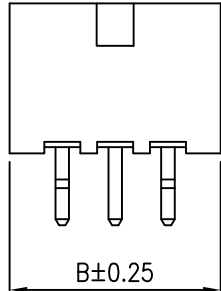
**ORDERING INFORMATION**

YY-1300 - W **\*\* S \* L \***  
                  1 2 3 4 5

1. No. of Circuits 02~16
2. S : Straight
3. Plated  
   T : Tin G : Gold
4. L : Lock
5. S : Without Kink  
   □ : Standard(With Kink)



04~06Pin



02~03Pin

Circuits	Dimension mm		Circuits	Dimension mm	
	A	B		A	B
2	2.50	7.50	10	22.50	27.50
3	5.00	10.00	11	25.00	30.00
4	7.50	12.50	12	27.50	32.50
5	10.00	15.00	13	30.00	35.00
6	12.50	17.50	14	32.50	37.50
7	15.00	20.00	15	35.00	40.00
8	17.50	22.50	16	37.50	42.50
9	20.00	25.00	--	--	--

TOLERANCE	
X.	--
X.X	±0.25
X.XX	±0.15
X.XXX	±0.05
ANGULAR	--
APPROVALS	
DRAWN	Frank
	22-September-2009
CHECKED	Denise
	22-September-2009
APPROVED	Jessica
	22-September-2009



TITLE 2.50mm(.098") Pitch  
Wire to Board Header

VIEW	SCALE	PART NO.	REV.
	3:1	YY-1300-W**S*L*	A0
UNIT	SIZE	DWG NO.	SHEET
MM	A4	YY-1300-W**S*L*-014	1 OF 1

