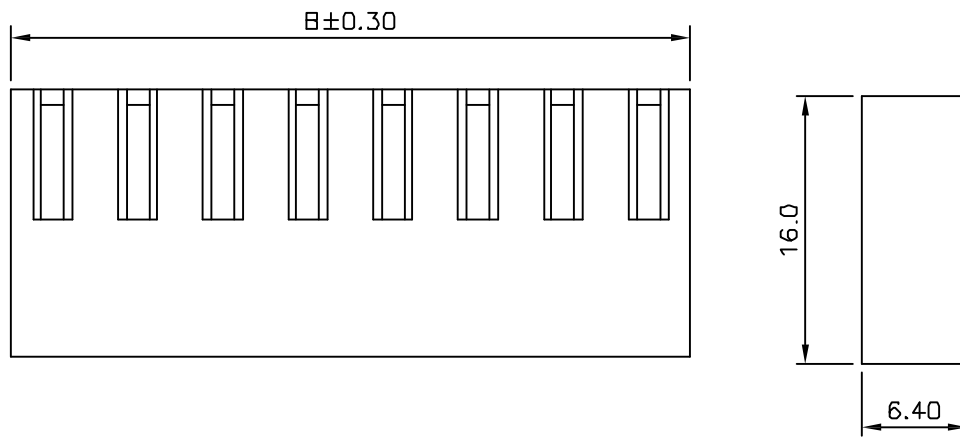
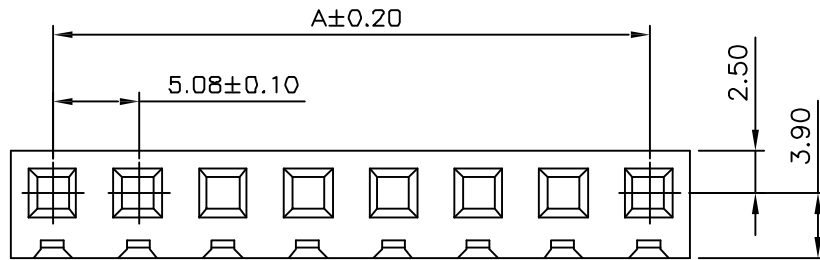




C **YI** US E182481

REV	DESCRIPTION	DATE
A1	EN991119-3	2010.11.19



NOTES

Compliant with IEC 60335-1 & IEC 60695-2-11
End-Product GWT750°C No Flame

Available in 02 through 12 Circuits

Body: Nylon 66 UL94-V2

Accepts YY-2500-T Crimp Terminal

Mates with YY-2900-W**S-GT or

YY-2900-W**R-GT Series Header

ORDERING INFORMATION

YY - 2900 - $\frac{H}{1}$ ** $\frac{F}{2}$ - GT

1. H : Housing
2. No. of Circuits 02~12
3. F : Flat

Circuits	Dimension		Circuits	Dimension	
	A	B		A	B
2	5.08	10.30	8	35.56	40.78
3	10.16	15.38	9	40.64	45.86
4	15.24	20.46	10	45.72	50.94
5	20.32	25.54	11	50.80	56.02
6	25.40	30.62	12	55.88	61.10
7	30.48	35.70	--	--	--

TOLERANCE	
X.	--
X.X	±0.25
X.XX	±0.15
X.XXX	±0.05
ANGULAR	--
APPROVALS	
DRAWN	Frank 19-November-2009
CHECKED	Denise 19-November-2009
APPROVED	Jessica 19-November-2009



Young Yak Enterprise Co., Ltd.

TITLE

5.08mm(.200") Pitch Housing

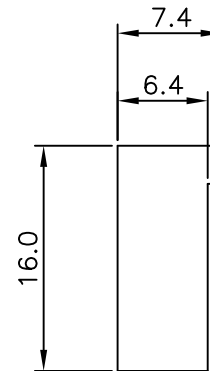
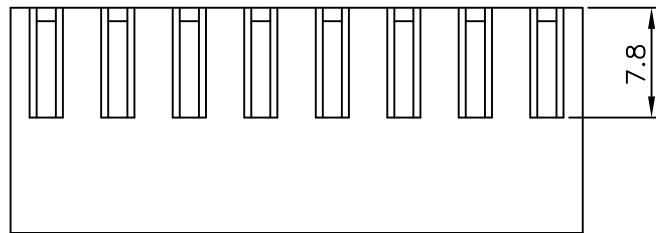
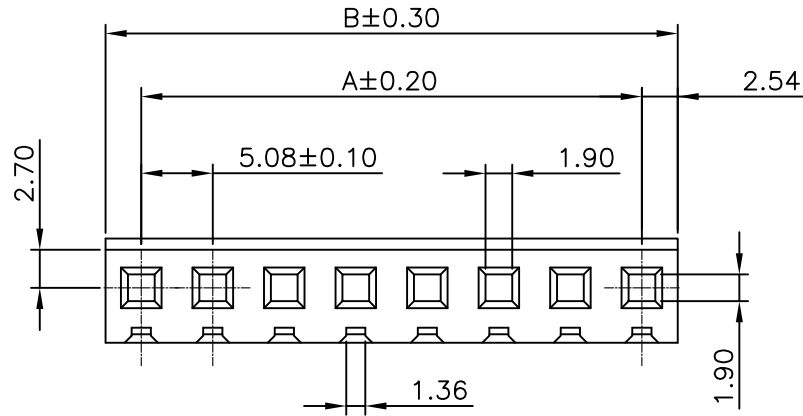
VIEW	SCALE	PART NO.	REV.
	F	YY-2900-H**F-GT	A1
UNIT	SIZE	DWG NO.	SHEET
MM	A4	YY-2900-H**F-GT-014	1 OF 1





C **YI** US E182481

REV	DESCRIPTION	DATE
A1	EN980715-1	2009.07.15



NOTES

Compliant with IEC 60335-1 & IEC 60695-2-11
End-Product GWT750°C No Flame

Available in 02 through 12 Circuits

Body: Nylon 66 UL94-V2

Accepts YY-2500-T Crimp Terminal

Mates with YY-2900-W**S or

YY-2900-W**R Series Header

ORDERING INFORMATION

YY - 2900 - $\frac{H}{1}$ $\frac{**}{2}$ - GT

1. H : Housing
2. No. of Circuits 02~12

Circuits	Dimension		Circuits	Dimension	
	A	B		A	B
2	5.08	10.30	8	35.56	40.78
3	10.16	15.38	9	40.64	45.86
4	15.24	20.46	10	45.72	50.94
5	20.32	25.54	11	50.80	56.02
6	25.40	30.62	12	55.88	61.10
7	30.48	35.70	--	--	--

TOLERANCE	
X.	--
X.X	±0.25
X.XX	±0.15
X.XXX	±0.05
ANGULAR	--
APPROVALS	
DRAWN	Frank 22-JULY-2009
CHECKED	Denise 22-JULY-2009
APPROVED	Jessica 22-JULY-2009



Young Yak Enterprise Co., Ltd.

TITLE
5.08mm(.200") Pitch Housing

VIEW	SCALE	PART NO.	REV.
	F	YY-2900-H**-GT	A1
UNIT	SIZE	DWG NO.	SHEET
MM	A4	YY-2900-H**-GT-014	1 OF 1





C **UL** US E182481

REV	DESCRIPTION	DATE
A1	EN980715-1	2009.07.15

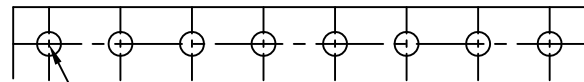
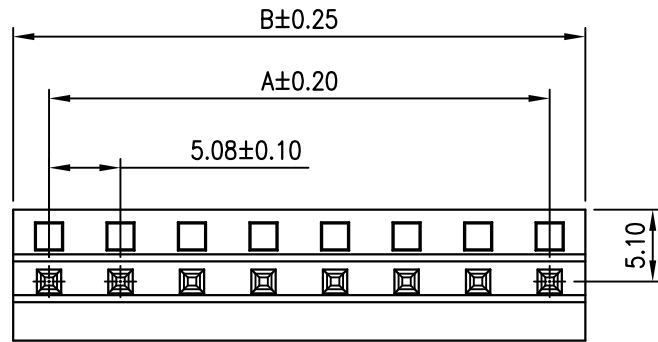
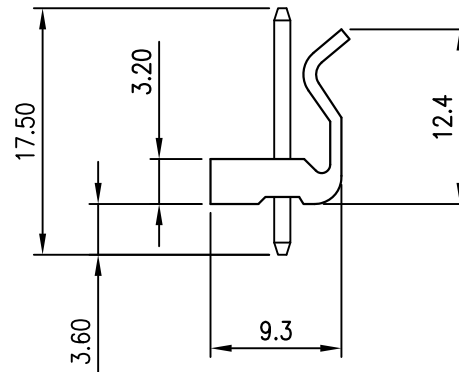
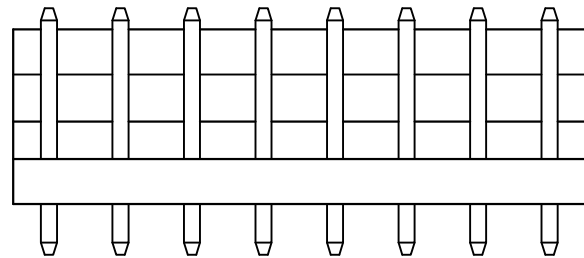
NOTES

Compliant with IEC 60335-1 & IEC 60695-2-11
 End-Product GWT750°C No Flame
 Material: Nylon 66 UL94-V2
 Available in 02 through 15 Circuits
 Mates with YY-2900-H Series Housing
 1.14mm(.045") Squard Pin
 Pin Material: Brass/Tin-Plated or Gold-Plated

ORDERING INFORMATION

YY - 2900 - W $\frac{**}{1}$ $\frac{S}{2}$ $\frac{*}{3}$ - GT

- No. of Circuits 02~15
- S : Straight
- Plated
 T : Tin
 G : Gold



P.C.B Thickness 0.80~1.60mm

P.C.B Hole dia $\varnothing 1.70\text{mm} \pm 0.05$

P.C.B. LAYOUT

Circuits	Dimension mm		Circuits	Dimension mm	
	A	B		A	B
2	5.08	10.16	9	40.64	45.72
3	10.16	15.24	10	45.72	50.80
4	15.24	20.32	11	50.80	55.88
5	20.32	25.40	12	55.88	60.96
6	25.40	30.48	13	60.96	66.04
7	30.48	35.56	14	66.04	71.12
8	35.56	40.64	15	71.12	76.20

TOLERANCE	
x.	--
x.x	± 0.25
x.xx	± 0.15
x.xxx	± 0.05
ANGULAR	--
APPROVALS	
DRAWN	Frank 22-JULY-2009
CHECKED	Denise 22-JULY-2009
APPROVED	Jessica 22-JULY-2009



TITLE
5.08mm Pitch Vertical Header

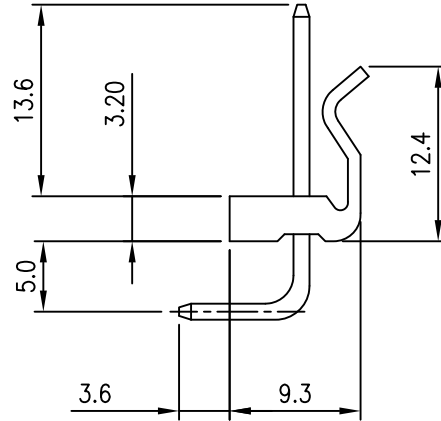
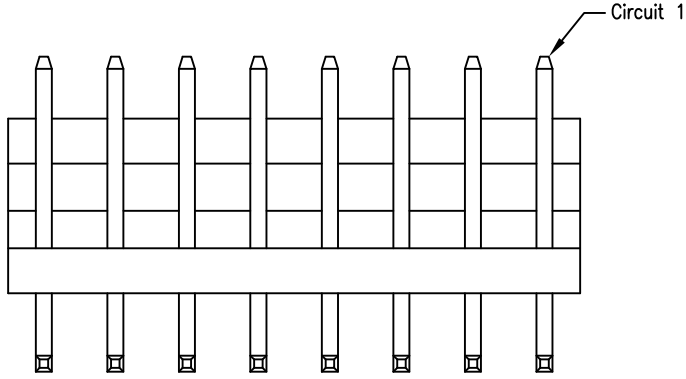
VIEW	SCALE	PART NO.	REV.
	F	YY-2900-W**S*-GT	A1
UNIT	SIZE	DWG NO.	SHEET
MM	A4	YY-2900-W**S*-GT-014	1 OF 1





C **RI** US E182481

REV	DESCRIPTION	DATE
A1	EN980715-1	2009.07.15



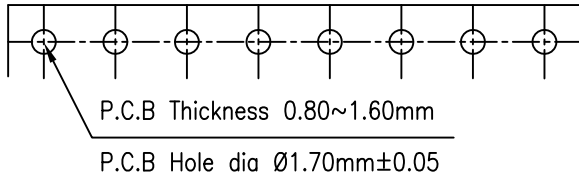
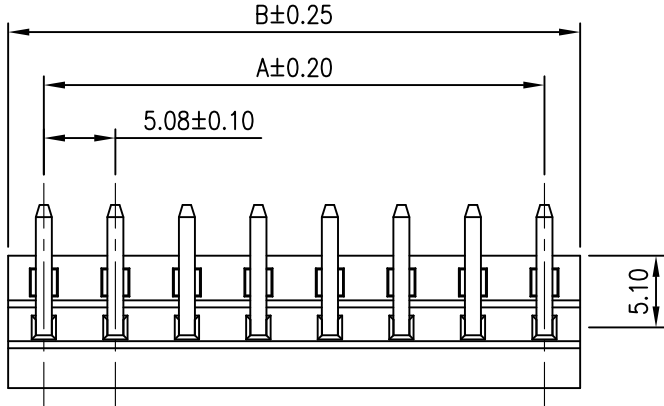
NOTES

Compliant with IEC 60335-1 & IEC 60695-2-11
 End-Product GWT750°C No Flame
 Material: Nylon 66 UL94-V2
 Available in 02 through 12 Circuits
 Mates with YY-2900-H Series Housing
 1.14mm(.045") Squard Pin
 Pin Material: Brass/Tin-Plated or Gold-Plated

ORDERING INFORMATION

YY - 2900 - W ****** **R** ***** - GT
 1 2 3

- No. of Circuits 02~12
- R : Right Angle
- Plated
 T : Tin
 G : Gold



Circuits	Dimension mm		Circuits	Dimension mm	
	A	B		A	B
2	5.08	10.16	8	35.56	40.64
3	10.16	15.24	9	40.64	45.72
4	15.24	20.32	10	45.72	50.80
5	20.32	25.40	11	50.80	55.88
6	25.40	30.48	12	55.88	60.96
7	30.48	35.56	--	--	--

TOLERANCE	
X.	--
X.X	±0.25
X.XX	±0.15
X.XXX	±0.05
ANGULAR	--
APPROVALS	
DRAWN	Frank 22-JULY-2009
CHECKED	Denise 22-JULY-2009
APPROVED	Jessica 22-JULY-2009



TITLE
 5.08mm Pitch Right Angle Header

VIEW	SCALE	PART NO.	REV.
	F	YY-2900-W**R*-GT	A1
UNIT	SIZE	DWG NO.	SHEET
MM	A4	YY-2900-W**R*-GT-014	1 OF 1



P.C.B. LAYOUT