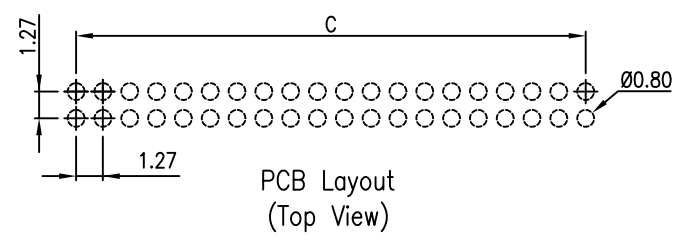
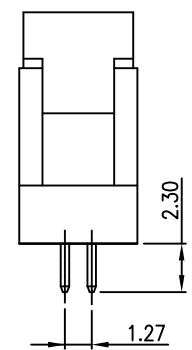
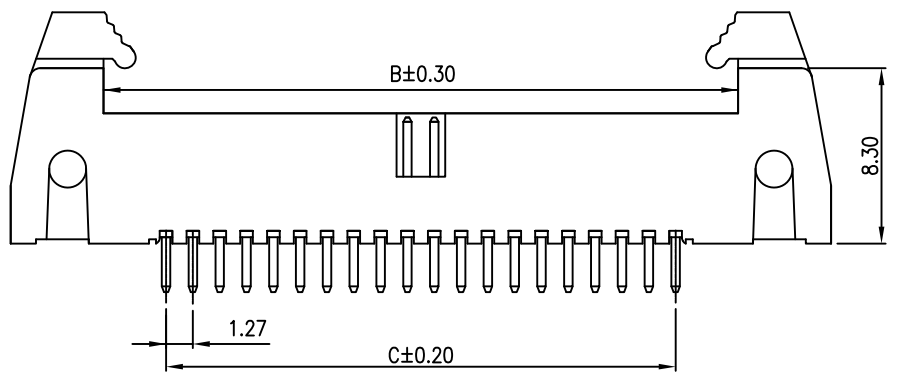
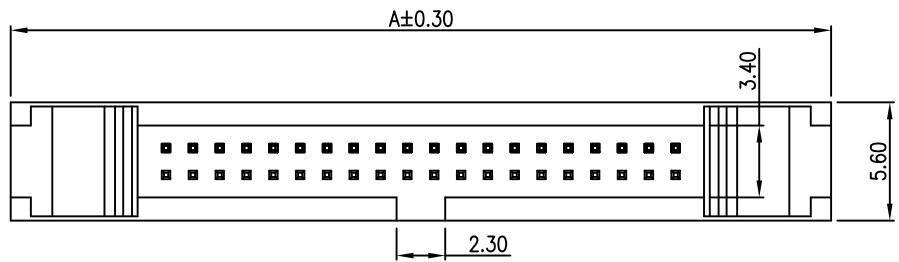


RoHS compliant

REV	DESCRIPTION	DATE



NOTES

Available in 06 through 100 Circuits
 Material: Thermoplastic UL94V-0 , Black
 0.40mm(.016") Square Pin
 Pin Material: Copper Alloy/Gold-flash

SPECIFICATION:

Current rating: 1.0 Amp. Max.
 Insulation Resistance: 1000MΩ Min. at 500V DC.
 Dielectric Withstanding Voltage: 600V AC/minute
 Operation temperature: -55°C to +105°C

ORDERING INFORMATION:

YY - 4851 - $\frac{XX}{1}$ $\frac{S}{2}$ $\frac{G}{3}$

- No. of Circuits : 06 ~ 100 Pin
- Connect Type
S : Straight
- Plating
G : Gold-flash

Circuits	Dimension mm			Circuits	Dimension mm			TOLERANCE	
	A	B	C		A	B	C	X.	--
2X3	18.31	8.46	2.54	2X20	39.90	30.05	24.13	X.X	±0.30
2X5	20.85	11.00	5.08	2X22	42.44	37.59	26.67	X.XX	±0.20
2X6	22.12	12.27	6.35	2X25	46.25	36.40	30.48	X.XXX	±0.10
2X7	23.39	13.54	7.62	2X30	52.60	42.75	36.83	ANGULAR	--
2X8	24.66	14.81	8.89	2X32	55.14	45.29	39.37	APPROVALS	
2X10	27.20	17.35	11.43	2X33	56.41	46.56	40.64	DRAWN	Frank
2X13	31.01	21.16	15.24	2X34	57.68	47.83	41.91	27-AUG-2008	
2X15	33.55	23.70	17.78	2X40	65.30	55.45	49.53	CHECKED	Denise
2X17	36.09	26.24	20.32	2X50	78.00	68.15	62.23	27-AUG-2008	



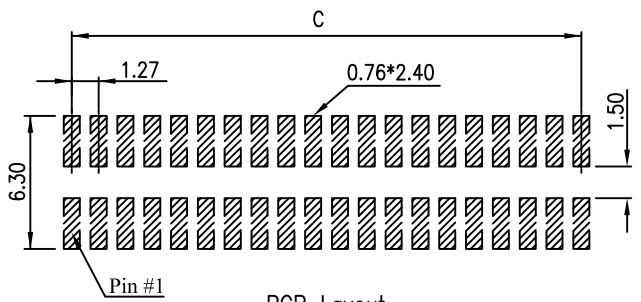
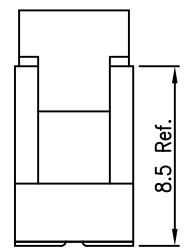
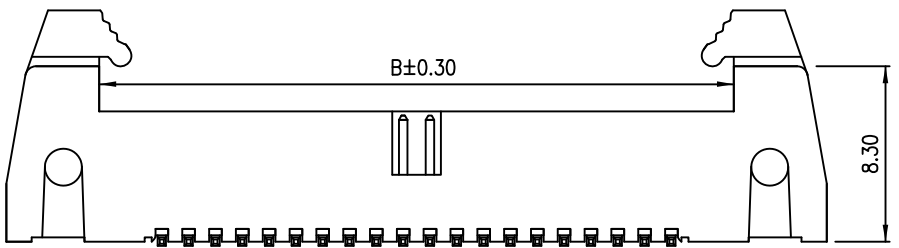
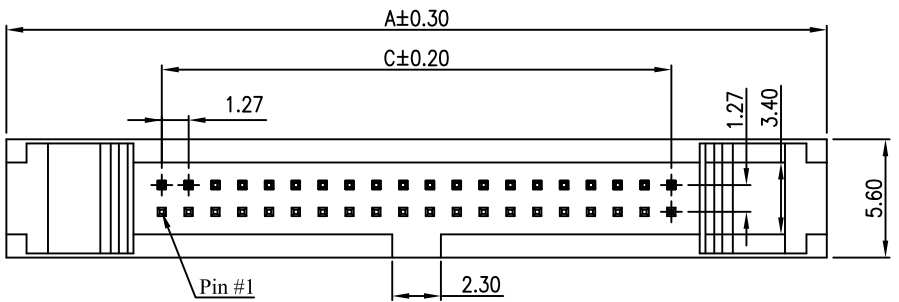
TITLE 1.27*1.27mm Box Header with Ejector
PCB Mount Vertical Type

VIEW	SCALE	PART NO.	REV.
	1:1	YY-4851-XXSG	A0
UNIT	SIZE	DWG NO.	SHEET
MM	A4	YY-4851-XXSG-048	1 OF 1



RoHS compliant

REV	DESCRIPTION	DATE



PCB Layout
(Top View)

NOTES

Available in 06 through 100 Circuits
 Material: Hi.-Temp. Plastic UL94V-0 , Black
 0.40mm(.016") Square Pin
 Pin Material: Copper Alloy/Gold-flash

SPECIFICATION:

Current rating: 1.0 Amp. Max.
 Insulation Resistance: 1000MΩ Min. at 500V DC.
 Dielectric Withstanding Voltage: 600V AC/minute
 Operation temperature: -55°C to +105°C

ORDERING INFORMATION:

YY - 4851 - XX M G
 1 2 3

- No. of Circuits : 06 ~ 100 Pin
- Connect Type
M : SMT Type
- Plating
G : Gold-flash

Circuits	Dimension mm			Circuits	Dimension mm			TOLERANCE	
	A	B	C		A	B	C	X.	--
2X3	18.31	8.46	2.54	2X20	39.90	30.05	24.13	X.X	±0.30
2X5	20.85	11.00	5.08	2X22	42.44	37.59	26.67	X.XX	±0.20
2X6	22.12	12.27	6.35	2X25	46.25	36.40	30.48	X.XXX	±0.10
2X7	23.39	13.54	7.62	2X30	52.60	42.75	36.83	ANGULAR	--
2X8	24.66	14.81	8.89	2X32	55.14	45.29	39.37	APPROVALS	
2X10	27.20	17.35	11.43	2X33	56.41	46.56	40.64	DRAWN	Frank
2X13	31.01	21.16	15.24	2X34	57.68	47.83	41.91	27-AUG-2008	
2X15	33.55	23.70	17.78	2X40	65.30	55.45	49.53	CHECKED	Denise
2X17	36.09	26.24	20.32	2X50	78.00	68.15	62.23	27-AUG-2008	
								APPROVED	Jessica
								27-AUG-2008	



TITLE 1.27*1.27mm Box Header with Ejector
PCB Surface Mount Type

VIEW	SCALE	PART NO.	REV.
	1:1	YY-4851-XXMG	A0
UNIT	SIZE	DWG NO.	SHEET
MM	A4	YY-4851-XXMG-048	1 OF 1

