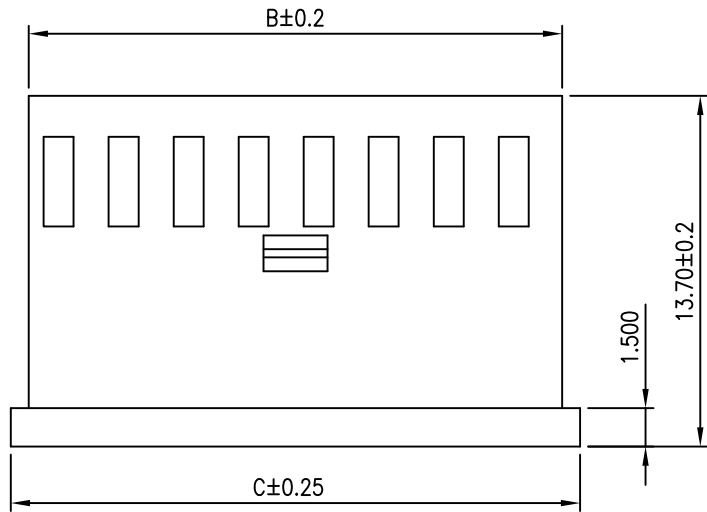
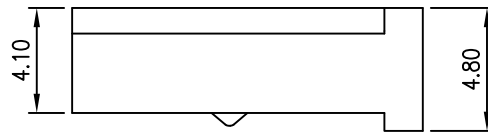
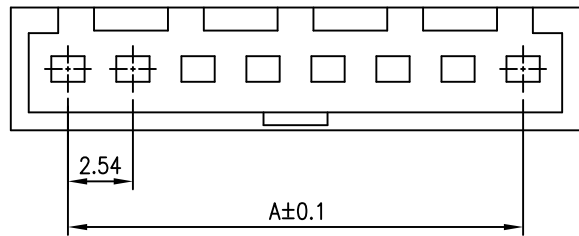




REV	DESCRIPTION	DATE
A1	ECN20130924-1	2013/9/24



NOTES

Available in 02 through 22 Circuits
 Material: PBT UL94-V0
 Accepts YY-A2540-T Crimp Terminal
 Mates with YY-A2540-WS or
 YY-A2540-WR series Header

ORDERING INFORMATION

YY-A2540 - H **
 $\frac{1}{2}$

1. H : Housing
2. No. of Circuits 02~22

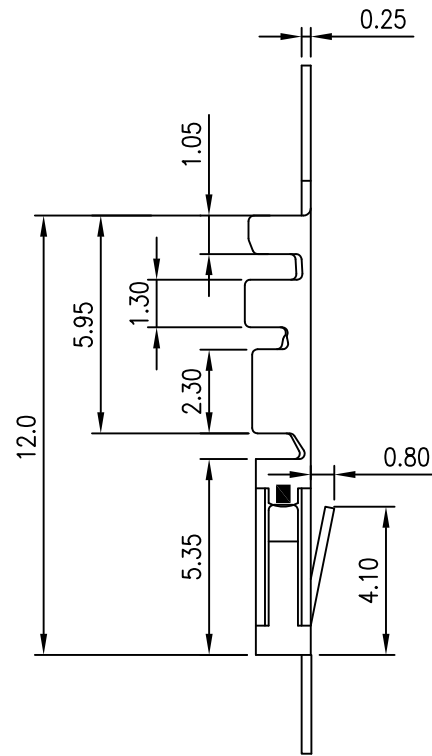
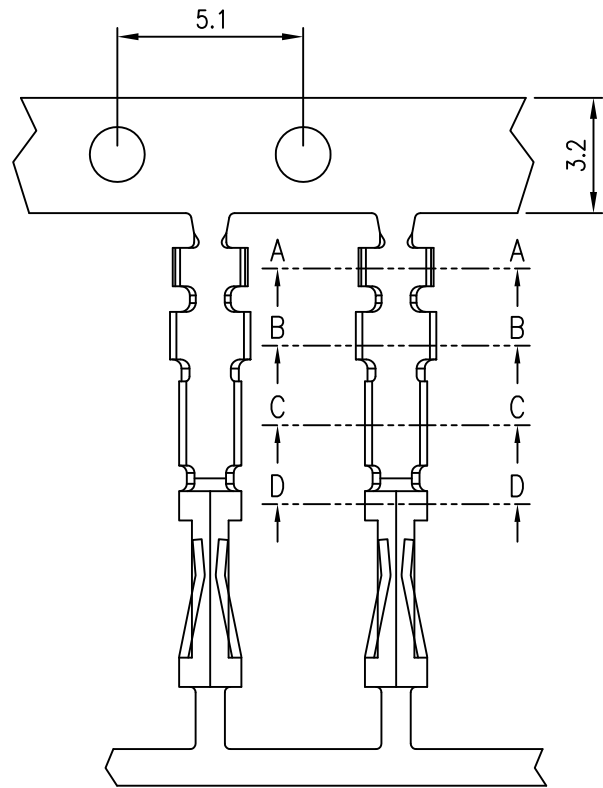
Circuits	Dimension mm			Circuits	Dimension mm			Circuits	Dimension mm		
	A	B	C		A	B	C		A	B	C
2	2.54	5.60	7.00	9	20.32	23.38	24.78	16	38.10	41.16	42.56
3	5.08	8.14	9.54	10	22.86	25.92	27.32	17	40.64	43.70	45.10
4	7.62	10.68	12.08	11	25.40	28.46	29.86	18	43.18	46.24	47.64
5	10.16	13.22	14.62	12	27.94	31.00	32.40	19	45.72	48.78	50.18
6	12.70	15.76	17.16	13	30.48	33.54	37.48	20	48.26	51.32	52.72
7	15.24	18.30	19.70	14	33.02	36.08	37.48	21	50.80	53.86	55.26
8	17.78	20.84	22.24	15	35.56	38.62	40.02	22	53.34	56.40	57.80

TOLERANCE					
X.	--	Young Yak Enterprise Co., Ltd. TITLE 2.54mm(.100") Pitch Wire to Board Housing			
X.X	±0.25				
X.XX	±0.10				
X.XXX	±0.05				
ANGULAR	--				
APPROVALS					
DRAWN	Kang	VIEW	SCALE	PART NO.	REV.
	24-September-2013		F	YY-A2540-H**	A1
CHECKED	Denise	UNIT	SIZE	DWG NO.	SHEET
	24-September-2013	MM	A4	YY-A2540-H**-A0108(ZH)	1 OF 1
APPROVED	Jessica				
	24-September-2013				





REV	DESCRIPTION	DATE
A1	EN001206-1	2011.12.06



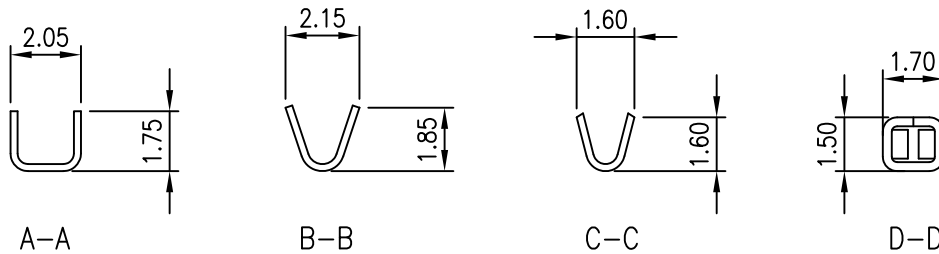
NOTES

Used in YY-A2540-H Series Housing
 Accepts AWG 22~26 Wire Range
 Insulation O.D.= 1.30 mm(max)
 Material : Phosphor Bronze
 Finish : Tin , Pre-tinned
 Qty/Reel : 15,000 PCS
 Thickness: 0.25mm

ORDERING INFORMATION

YY-A2540 - T TA P
 1 2 3

1. T : Terminal
2. Plated
TA : Tin , Pre-tinned
3. Material
P : Phosphor Bronze



TOLERANCE	
X.	--
X.X	±0.25
X.XX	±0.15
X.XXX	±0.05
ANGULAR	--



TITLE
 2.54mm(.100") Pitch
 Wire to Board Terminal

APPROVALS		VIEW	SCALE	PART NO.	REV.
DRAWN	Kang		F	YY-A2540-TTAP	A2
CHECKED	Denise				
APPROVED	Jessica	UNIT	SIZE	DWG NO.	SHEET
		MM	A4	YY-A2540-TTAP-059	1 OF 1

